



S320/S310/S302 Chelsio Ethernet Adapter
Installation and User's Guide for Microsoft® Windows®
Server™ 2003, Windows® XP, Windows Server™ 2008,
Windows® Vista, Windows® 2008 R2 and Windows® 7.

Copyright 2009 Chelsio Communications, Inc. All rights reserved.
370 San Aleso Ave, Suite 100, Sunnyvale, CA 94085

This document and related products are distributed under licenses restricting their use, copying, distribution, and reverse-engineering. No part of this document may be reproduced in any form or by any means without prior written permission by Chelsio Communications.

N210 and N110 are trademarks of Chelsio Communications, Inc.
Microsoft, Windows, and Windows Server are either registered trademarks or trademarks of Microsoft Corporation.

THIS DOCUMENTATION IS PROVIDED "AS IS" AND WITHOUT ANY EXPRESS OR IMPLIED WARRANTIES, INCLUDING, WITHOUT LIMITATION, THE IMPLIED WARRANTIES OF MERCHANTABILITY AND FITNESS FOR A PARTICULAR PURPOSE.

THE USE OF THE SOFTWARE AND ANY ASSOCIATED MATERIALS (COLLECTIVELY THE "SOFTWARE") IS SUBJECT TO THE SOFTWARE LICENSE TERMS OF CHELSIO COMMUNICATIONS, INC.

Table of Contents

Table of Contents	3
Introduction	4
Hardware and Software Requirements	4
Scalable Networking Pack	4
Hardware Installation	4
Software Installation Guide for Win2k3, WinXP	5
Virtual Bus Driver Installation	5
NDIS Miniport Installation	13
Uninstallation of NDIS Miniport:	19
Assigning IP address to the Chelsio Ethernet Adapter	23
Software Installation Guide for Win2k8, Vista, Win2k8 R2, Win 7	24
Virtual Bus Driver Installation	24
NDIS Miniport Installation	31
Uninstallation of NDIS Miniport:	37
Assigning IP address to the Chelsio Ethernet Adapter	40
Driver Configuration	40
VBD Driver Parameters	40
NDIS Miniport Driver Parameters	43

Introduction

This document describes the installation of Chelsio S320, S310 and S302 Ethernet Adapter drivers for Microsoft Windows Server 2003, Windows XP, Windows Server 2008, Windows Vista, Windows 2008 R2 and Windows 7.

Hardware and Software Requirements

The Chelsio Ethernet driver supports the following architectures.

All x86 (i386) architectures supporting PCI*/PCI-X (133, 100, or 66Mhz) and PCIE (x4, x8) adapters.

- AMD CPUs, 32-bit and 64-bit (x86/x86_64/amd64)
- Intel CPUs, 32-bit and 64-bit (x86/x86_64)

*The Chelsio Ethernet adapter supports 3.3v PCI bus only. Running a 10Gb adapter on a PCI (32-bit) bus is not recommended as throughput performance will be significantly reduced by the limitations of PCI.

The Chelsio Ethernet driver is designed for Windows Server 2003, Windows Server 2008, Windows Vista, Windows 2008 R2 and Windows 7 but should run on Windows Operating System which supports NDIS 5.1, such as Windows XP.

Scalable Networking Pack

Chelsio Recommends Installing Microsoft SNP (Scalable Networking Pack) which provides support for Receive Side Scaling (RSS). Please refer to Knowledge Base Article KB912222 from Microsoft for the installation of SNP bits.

If SP2 has already been installed then there is no need install the above SNP pack as the SNP pack is already included in SP2 update

Hardware Installation

1. Shutdown and power off your system.
2. Power off all remaining peripherals attached to your system.
3. Unpack the Chelsio Ethernet adapter and place it on an anti-static surface.
4. Remove the system case cover according to the system manufacturer's instructions.

5. Remove the PCI filler plate from the slot where you will install the 10Gb Ethernet adapter.
For maximum performance, it is highly recommended to install the adapter into a PCI-X slot running at 133Mhz or PCIE x8 slot.
6. Holding the Chelsio Ethernet adapter by the edges, align the edge connector with the PCI connector on the motherboard. Apply even pressure on both edges until the card is firmly seated. It may be necessary to remove the XFP/SFP (optics) modules prior to inserting the adapter.
7. Secure the Chelsio Ethernet adapter with a screw, or other securing mechanism, as described by the system manufacturer's instructions. Replace the case cover.
8. Connect a fiber cable, multi-mode for short range (SR) optics or single-mode for long range (LR) optics, to the 10Gb Ethernet adapter or regular Ethernet cable for the 1Gb Ethernet adapter.

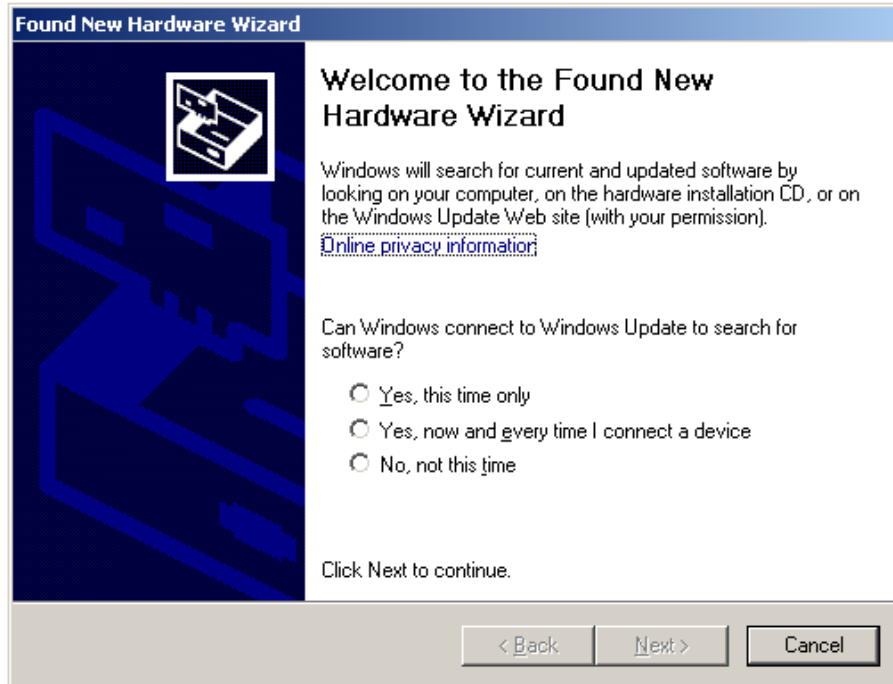
Software Installation Guide for Win2k3, WinXP

The Chelsio Ethernet driver currently has two components.

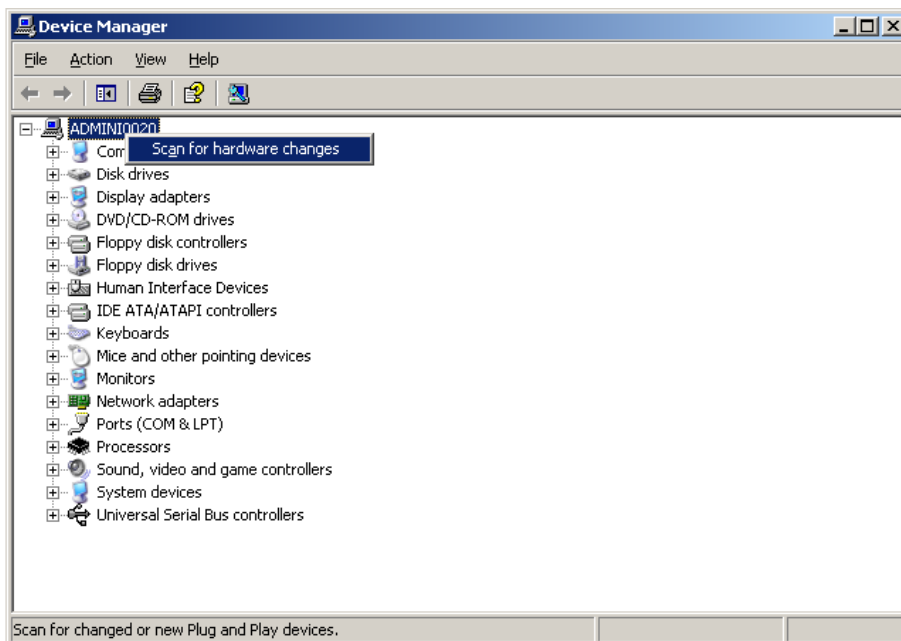
1. Chelsio S320/S310/S302 Virtual Bus Driver (ch_vbd.sys)
2. Chelsio S320/S310/S302 Ndis Miniport Driver (cxge3.sys)

Please install the components in the order they are being described here.

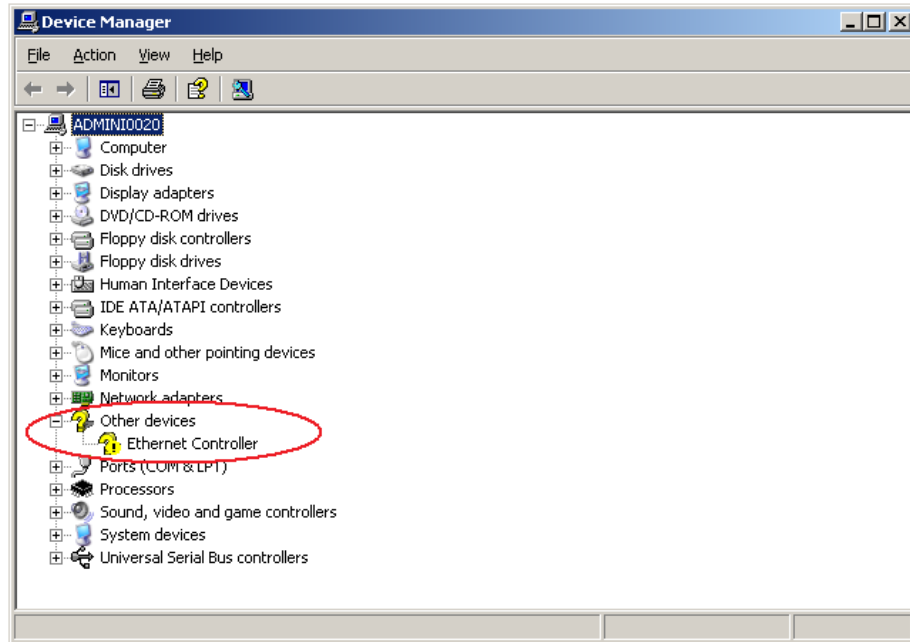
Virtual Bus Driver Installation



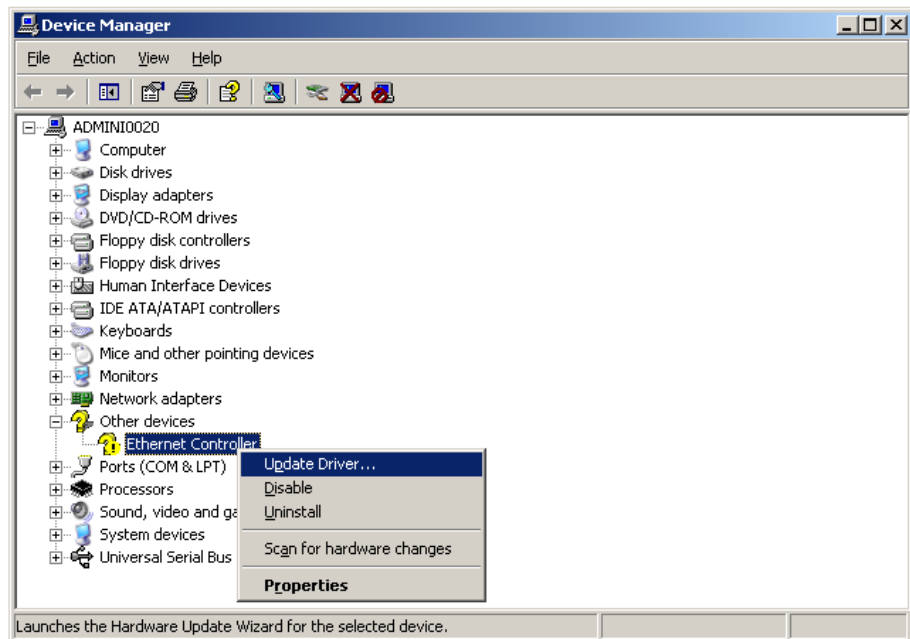
If the PC has just been booted up with the Chelsio NIC card, you will see the Hardware Wizard like above.



Else, go to device manager, right click on the host name and click on “**Scan for hardware changes**” it will scan for PNP compliant hardware.



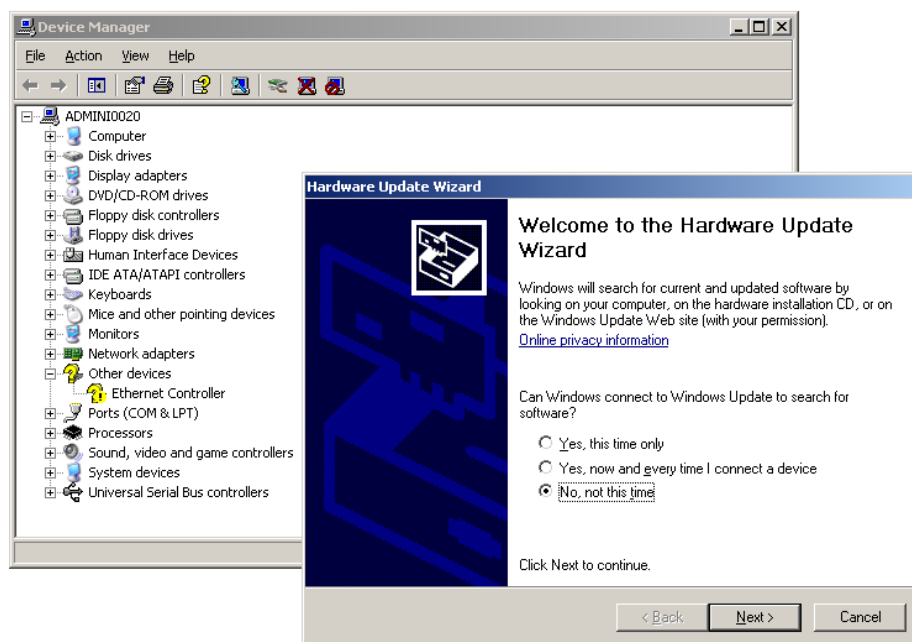
After scanning for hardware changes, device manager ends up with “**Ethernet controller**” icon in the “**other devices**” like above.



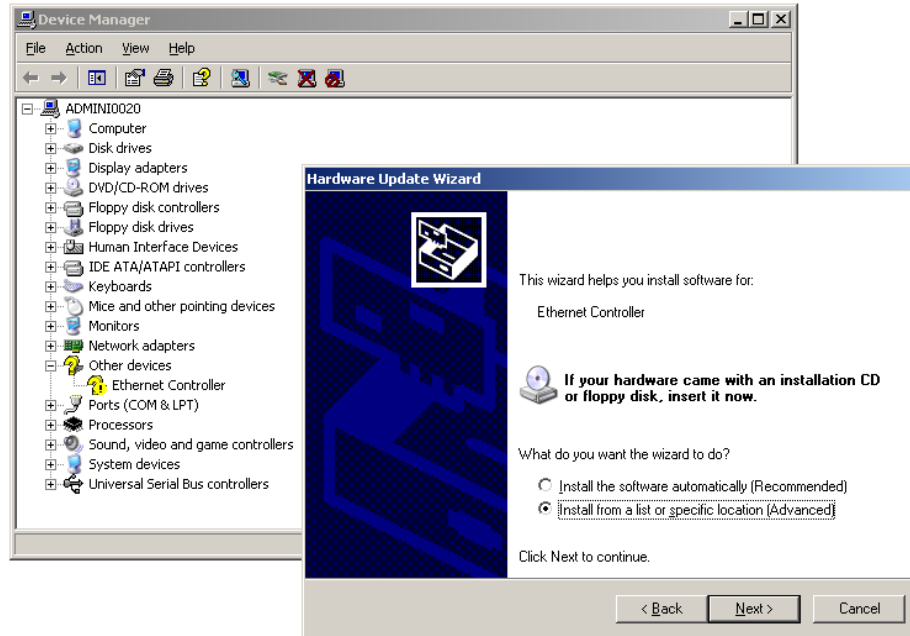
Right click on the “**Ethernet controller**” and click on “**Update Driver...**”.



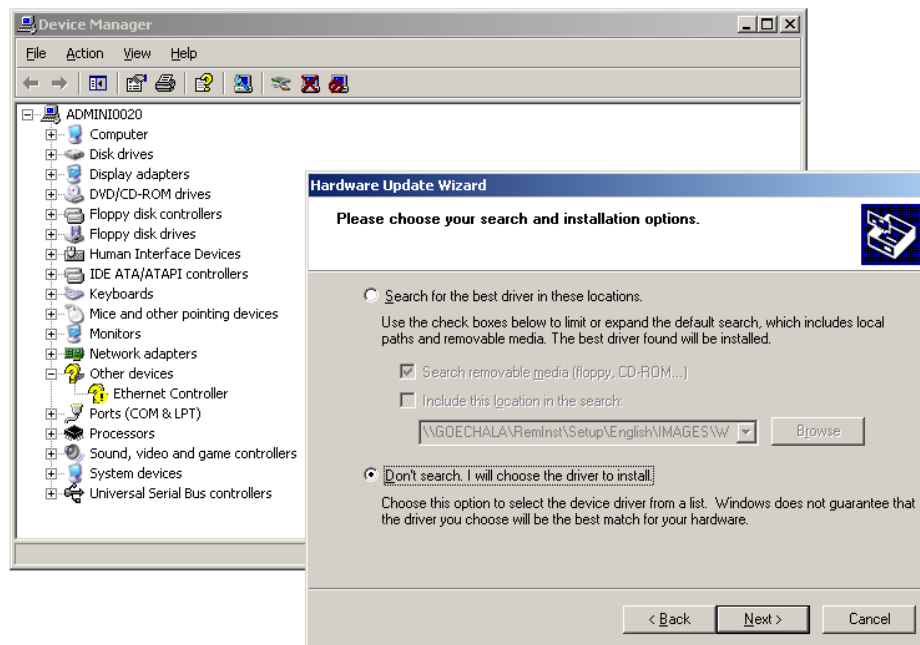
Once you click on “**Update Driver...**” it will open up the Wizard similar to that of the one which popped up when you booted up the machine with the Chelsio NIC card .



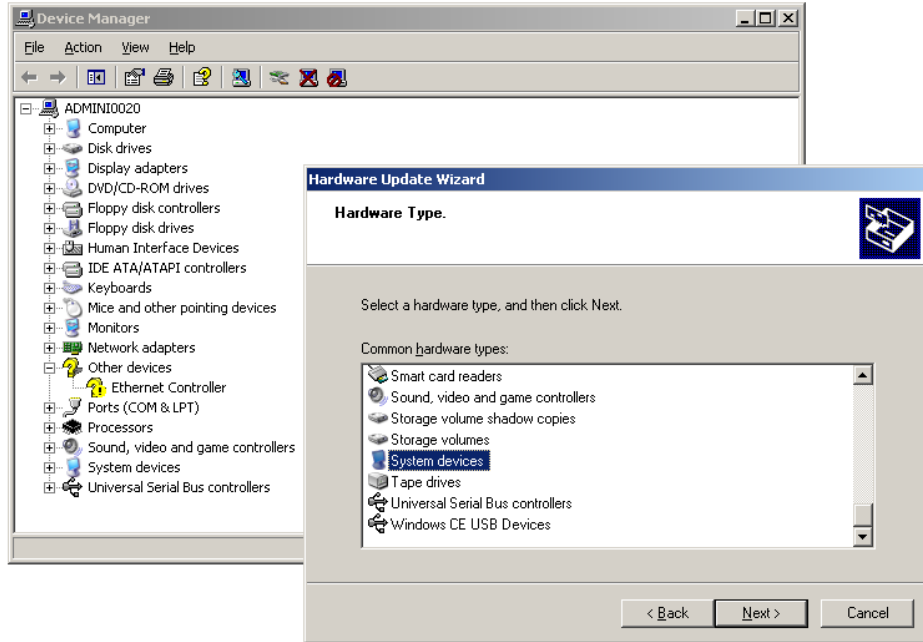
Select the ‘**No, not this time**’ option and click “**Next**”.



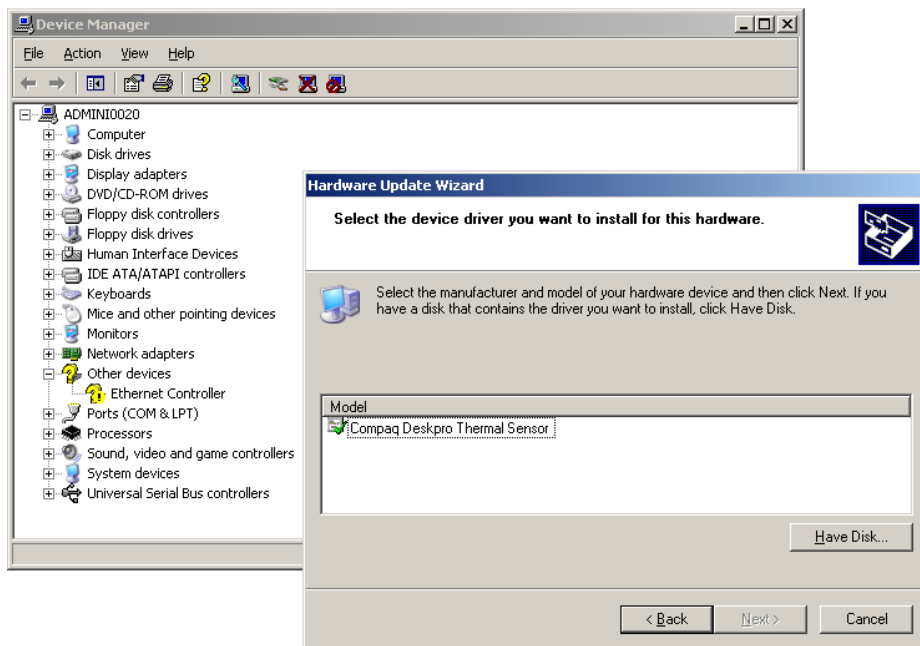
Select the **“Install from a list or Specific Location (Advanced)”** option and click **“Next”**



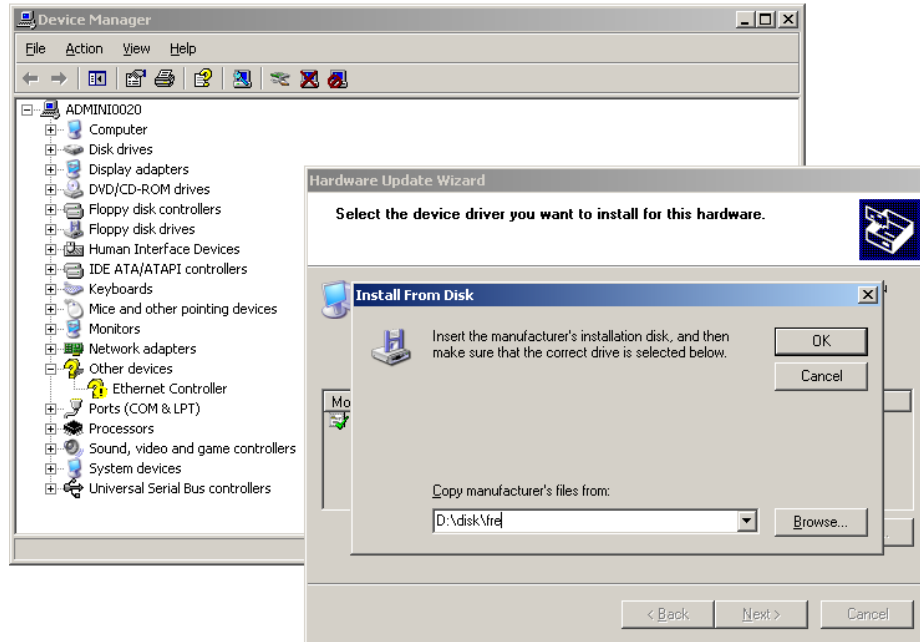
Select the **“Don’t search, I will choose the driver to install”** option and click **“Next”**.



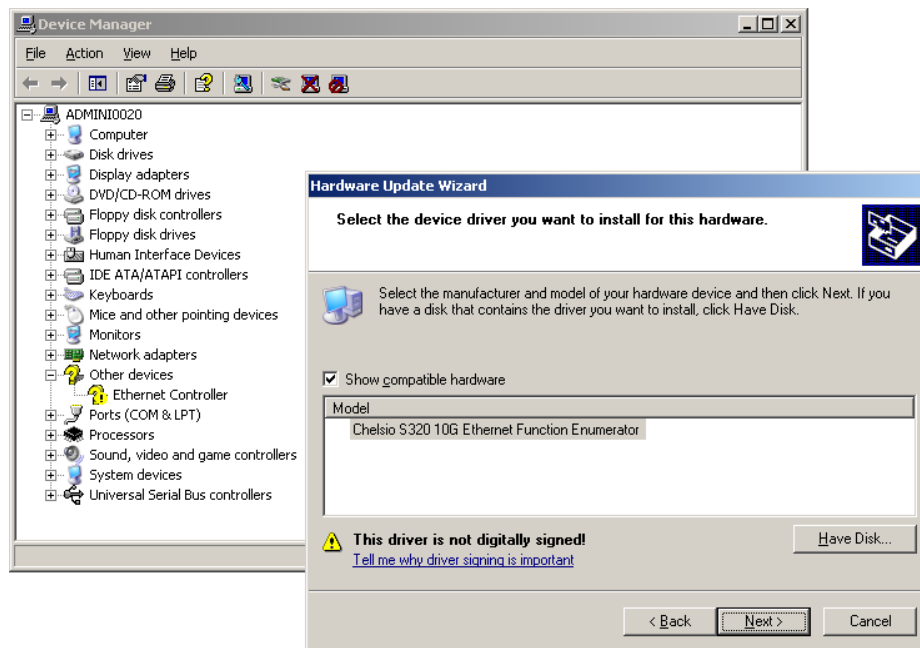
Select “System devices” and Click “Next”



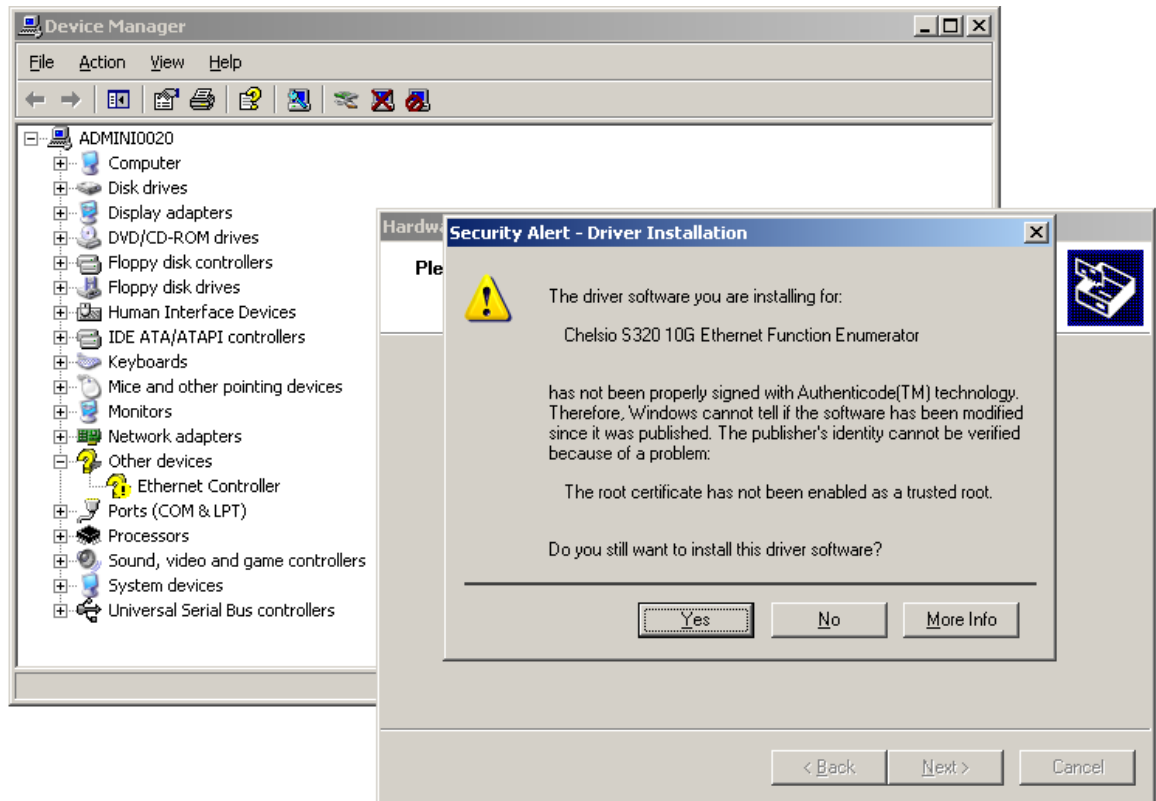
Click on “Have Disk...” button.



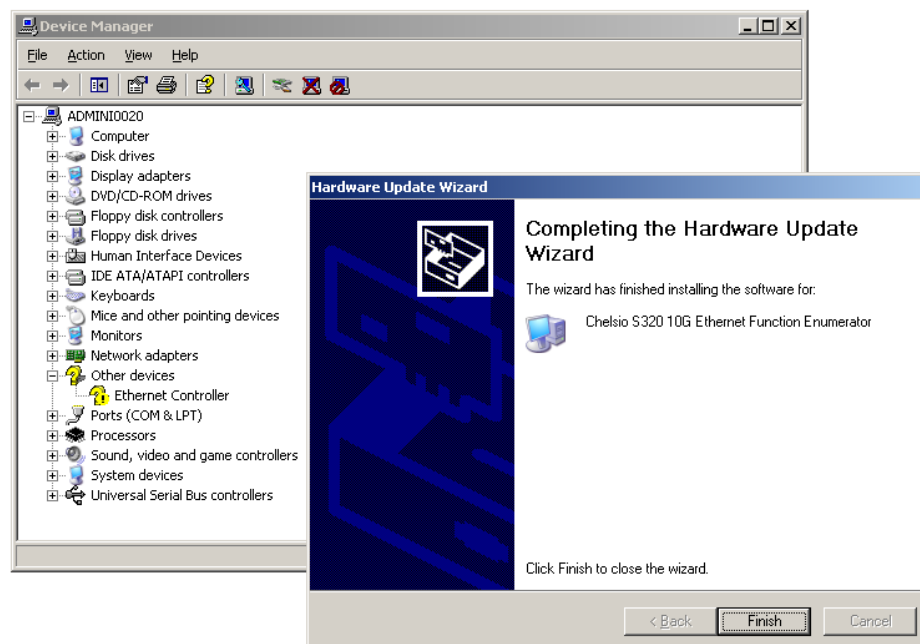
Browse for the “**ch_vbd.inf**” file and click “**Open**” and then press **OK**.



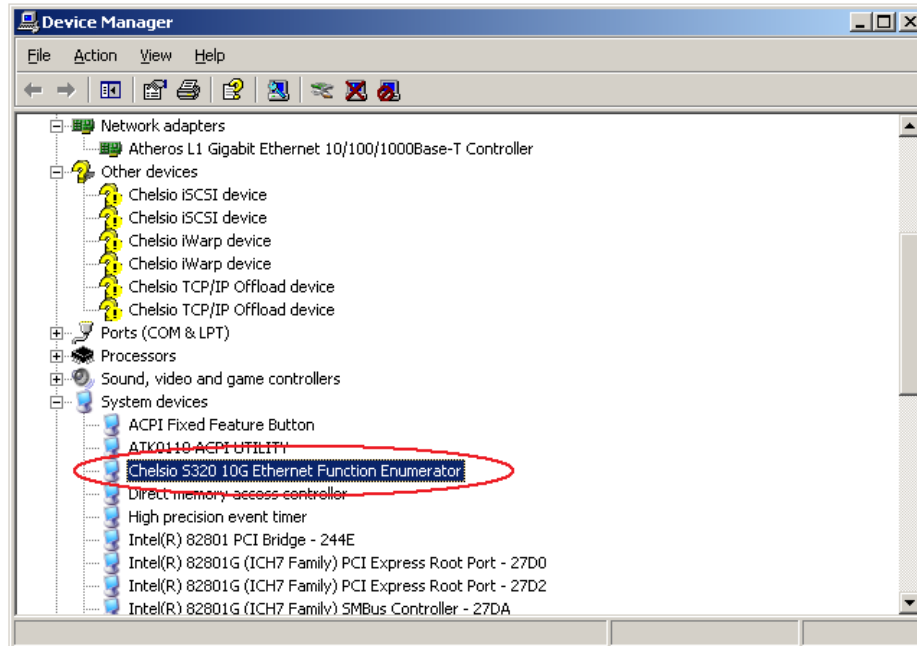
The Hardware Wizard will show the “**Chelsio Ethernet Function Enumerator**” in the list. Select this entry and click “**Next**”.



Click on “**Yes**” if it complains about the driver signature, else,

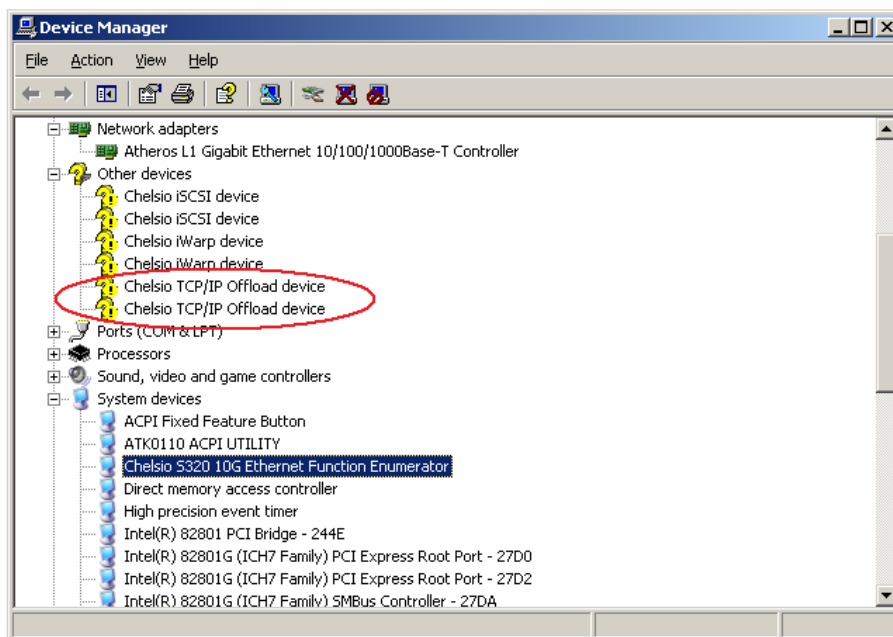


Click on “**Finish**” button.

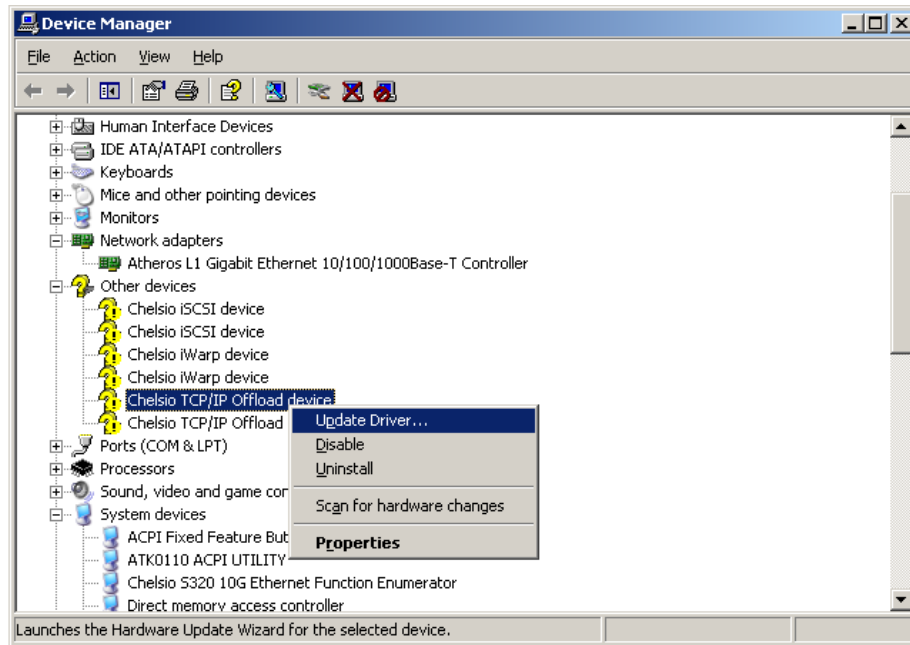


You have successfully installed the Virtual Bus Driver Installation, once you see the Multifunction adapters like above.

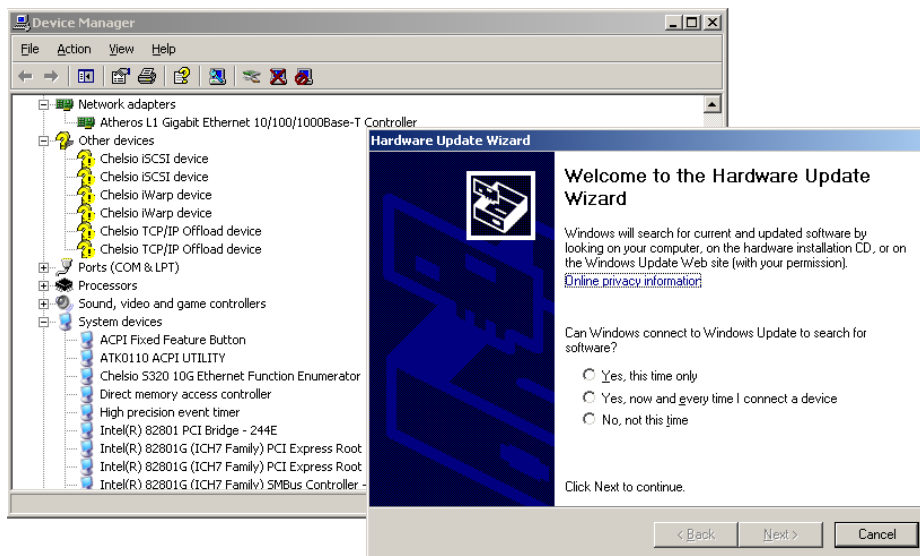
NDIS Miniport Installation



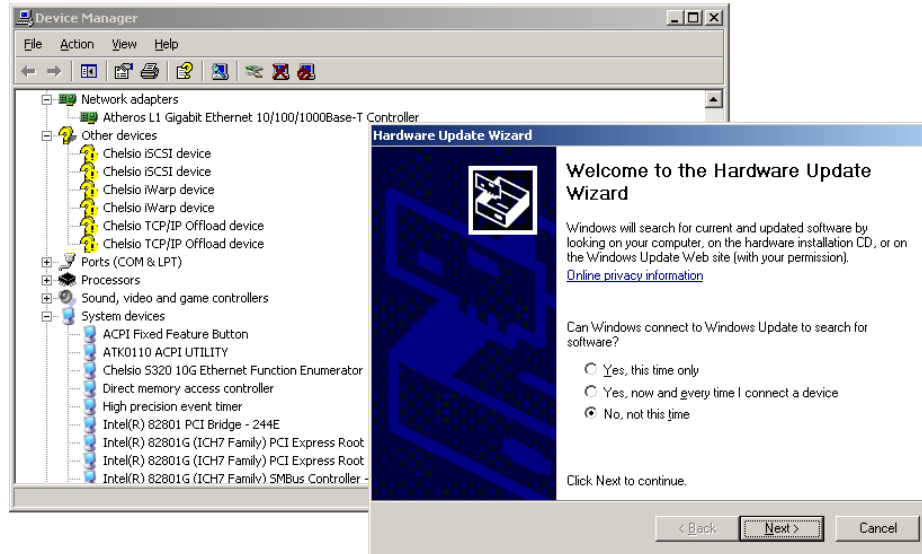
Once Windows has installed the Virtual Bus Driver, it will automatically enumerate the network adapter.



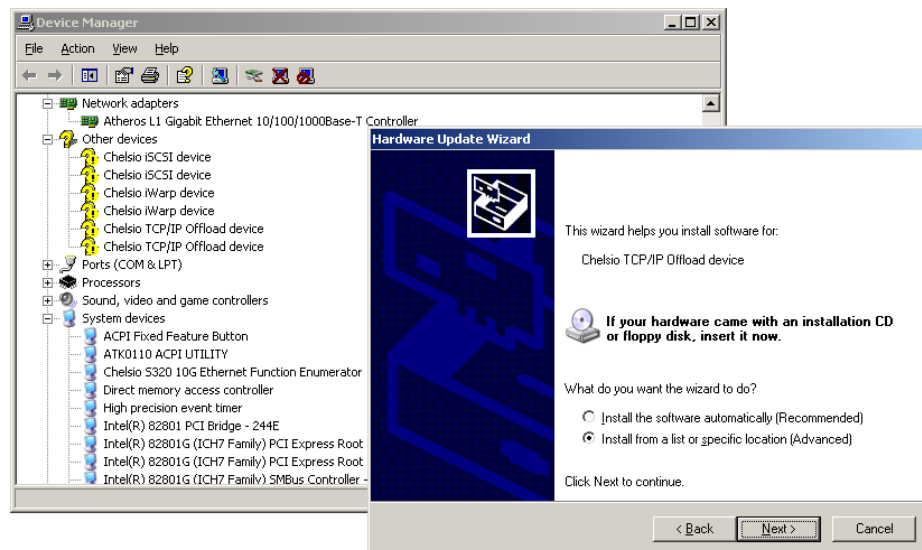
Right click on “Chelsio TCP/IP Offload device” and click on “Update Driver...”



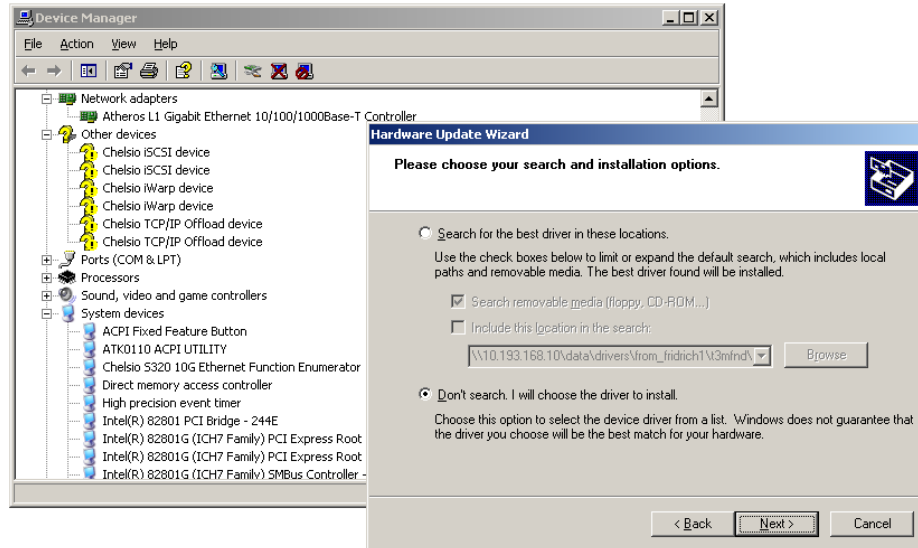
This Wizard may also open up as soon as we finish installing Virtual Bus Driver.



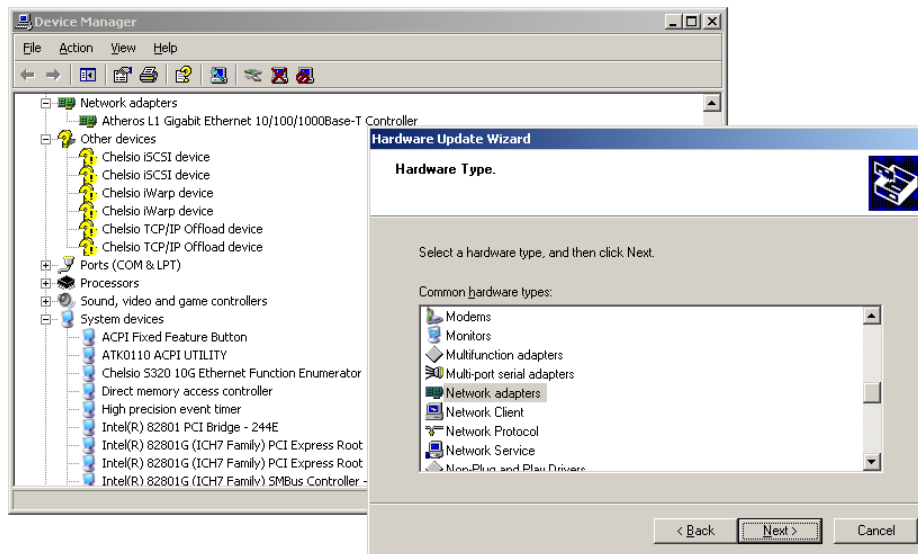
Select the ‘No, not this time’ option and click “Next”.



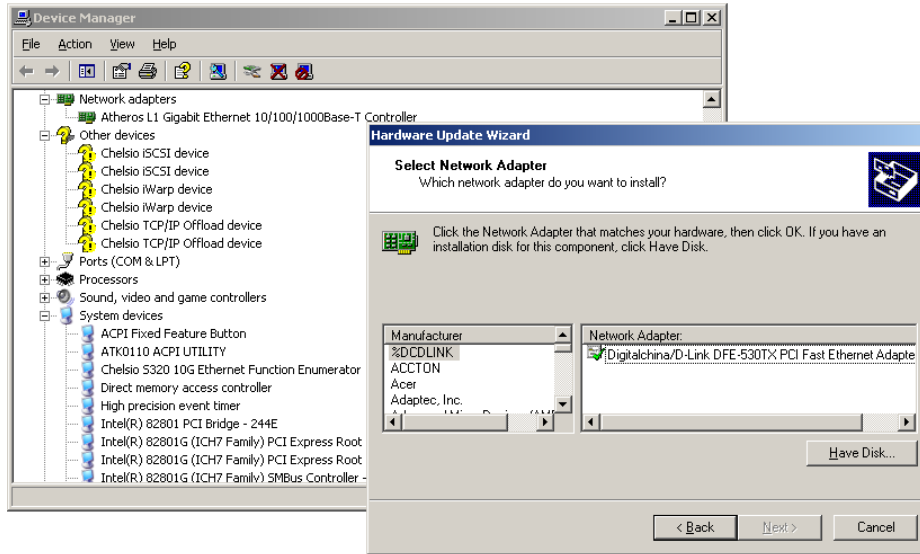
Select the “**Install from a list or Specific Location (Advanced)**” option and click “Next”.



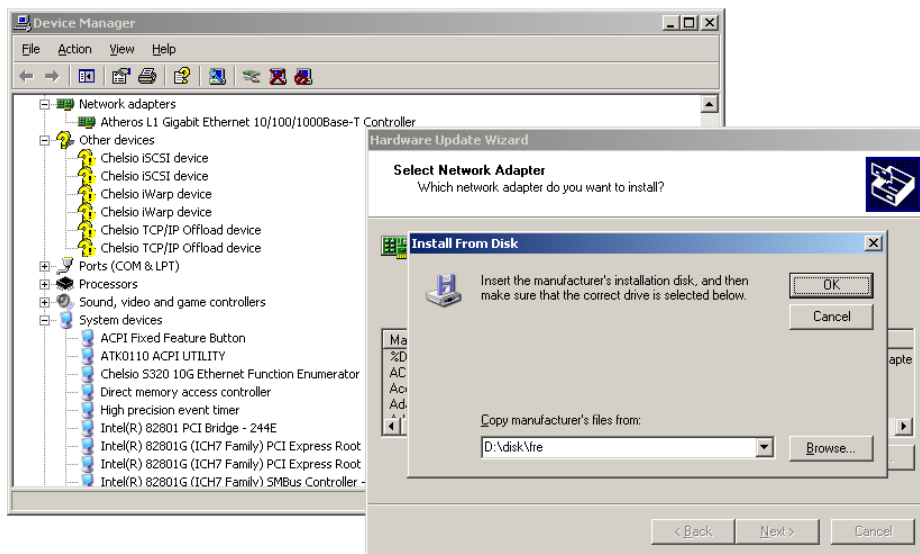
Select the “**Don’t search, I will choose the driver to install**” option and click “**Next**”.



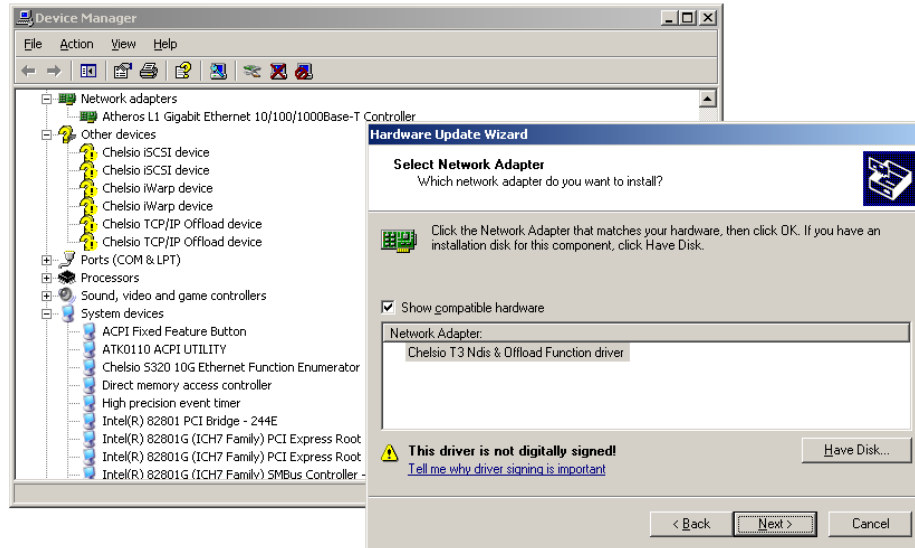
Select “**Network Adapters**” from the list and Click “**Next**”.



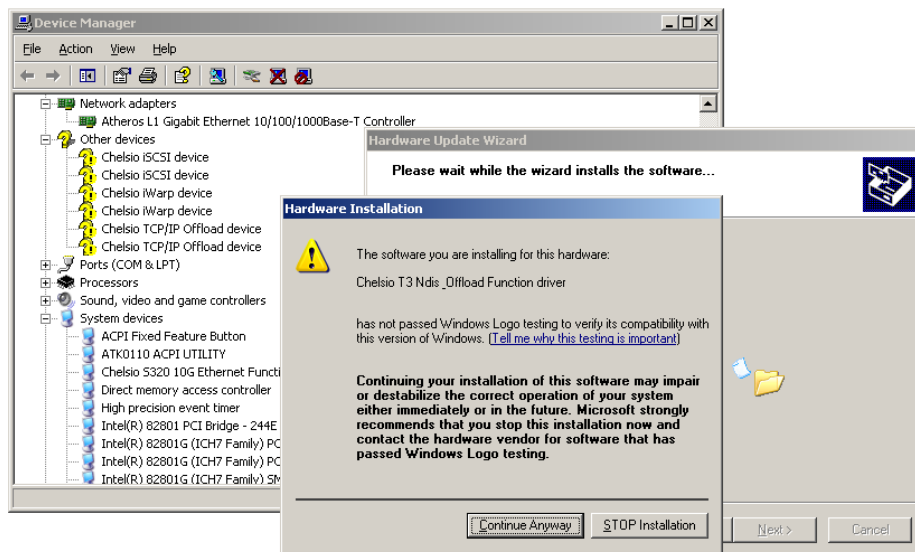
Click on “Have Disk...” button.



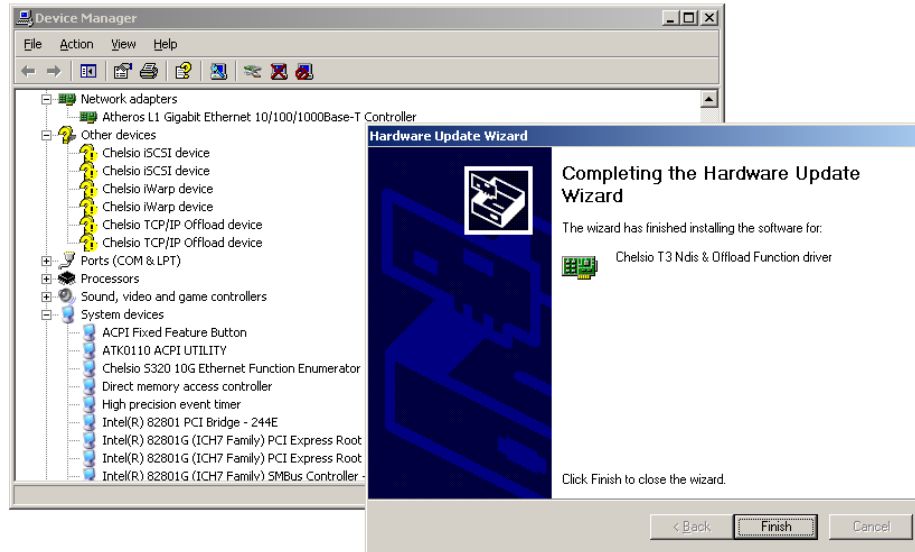
Browse for the “cxge3.inf” file and click “Open” and then press **OK**.



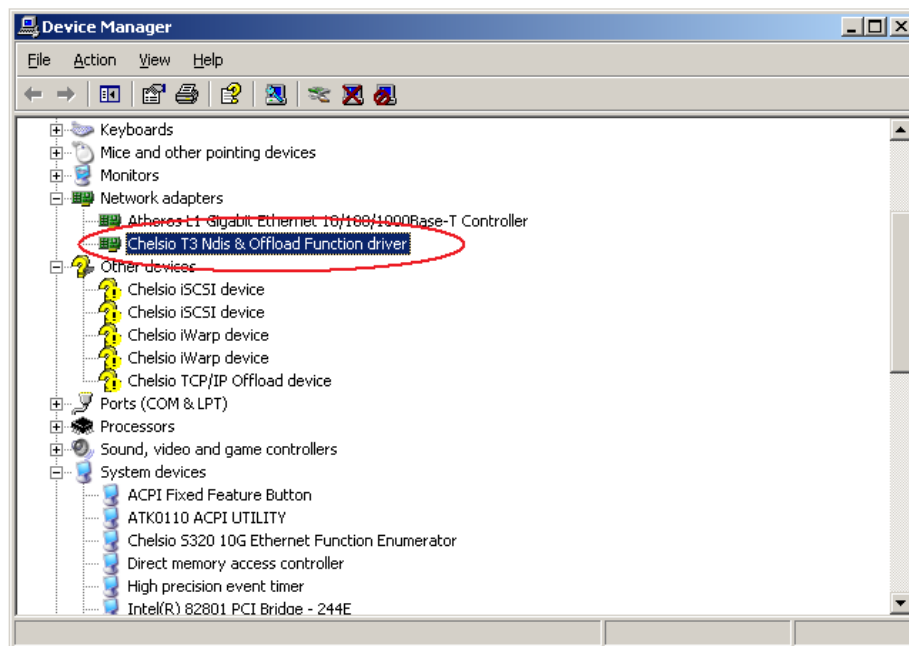
The Hardware Wizard will show the “**Chelsio T3 NDIS & Offload driver**” in the list. Select this entry and click “**Next**”.



Click on “**Continue Anyway**” if it complains about the driver signature, else,



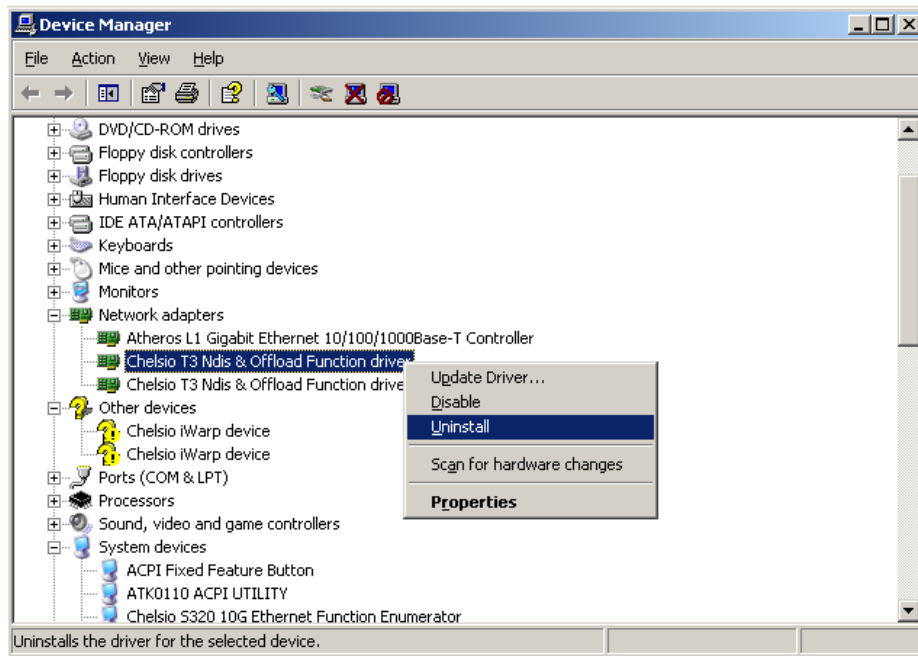
Click on “**Finish**” button.



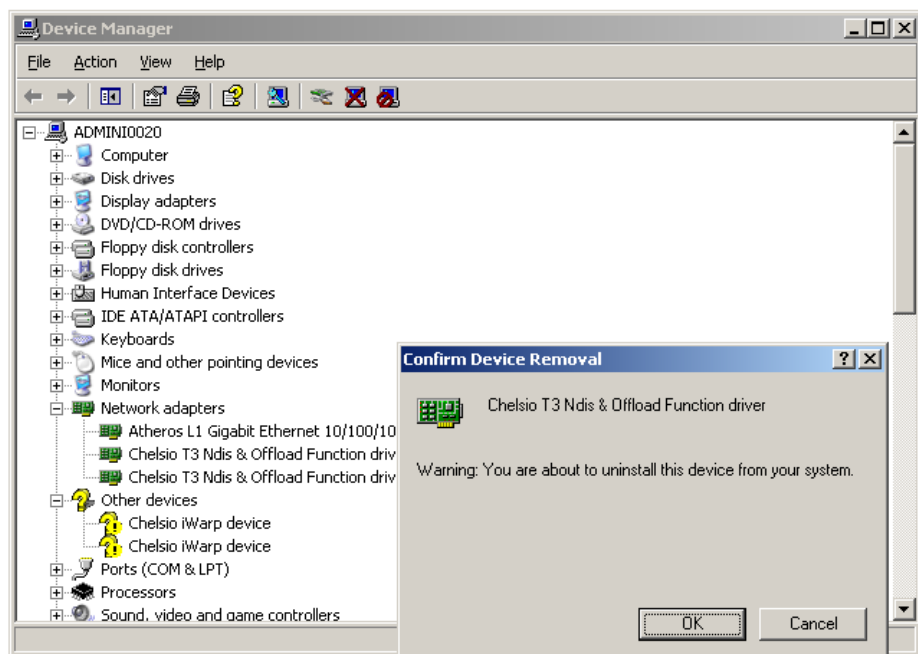
If the NDIS Miniport is installed successfully, you will find “**Chelsio T3 Ndis and Offload Functional Driver**” in Network Adapters. Continue the same steps for the other NDIS port.

Uninstallation of NDIS Miniport:

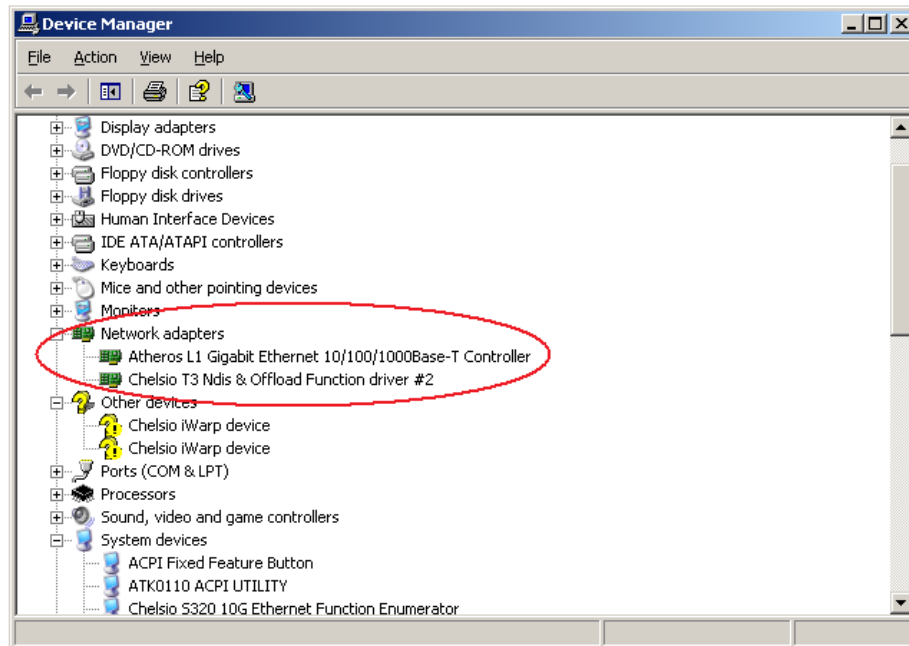
While uninstalling the driver first you need to uninstall NDIS Miniport Driver and then the Virtual Bus Driver.



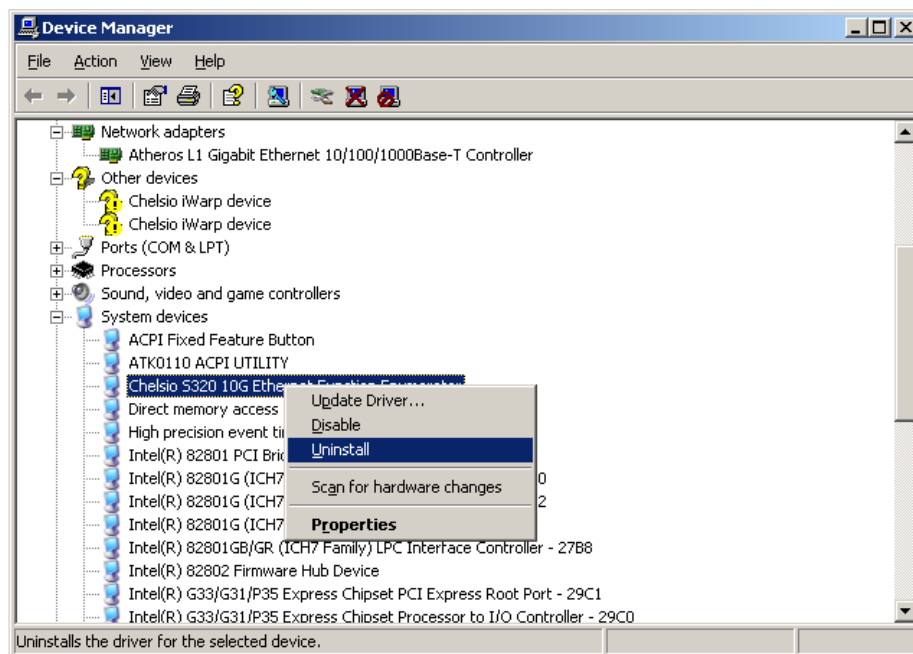
In order to uninstall the NDIS Miniport Driver, open device manager right click on the **“Chelsio T3 Ndis & Offload Function”** and click on **“Uninstall”** option.



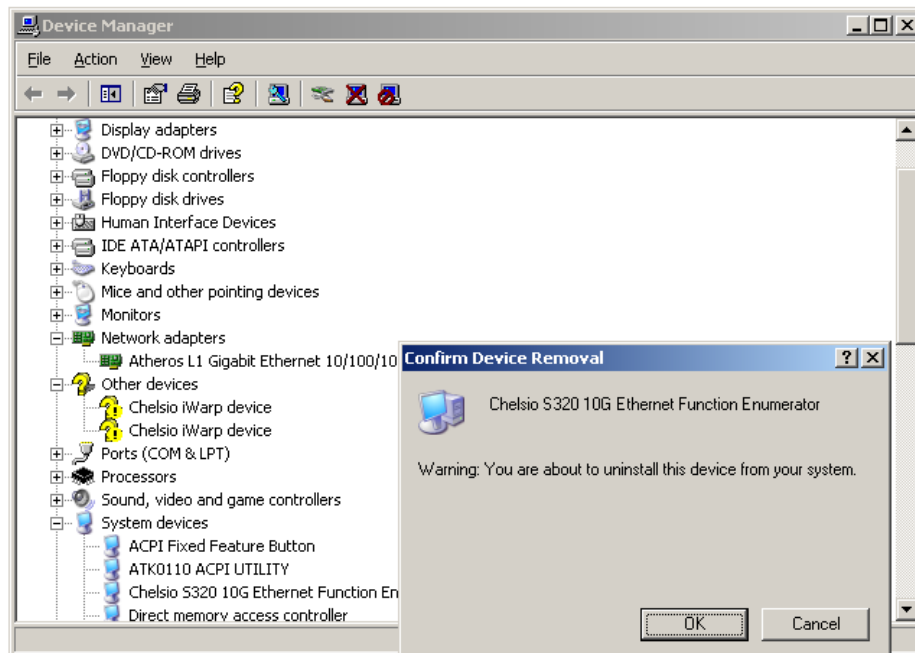
Click on **“OK”** button.



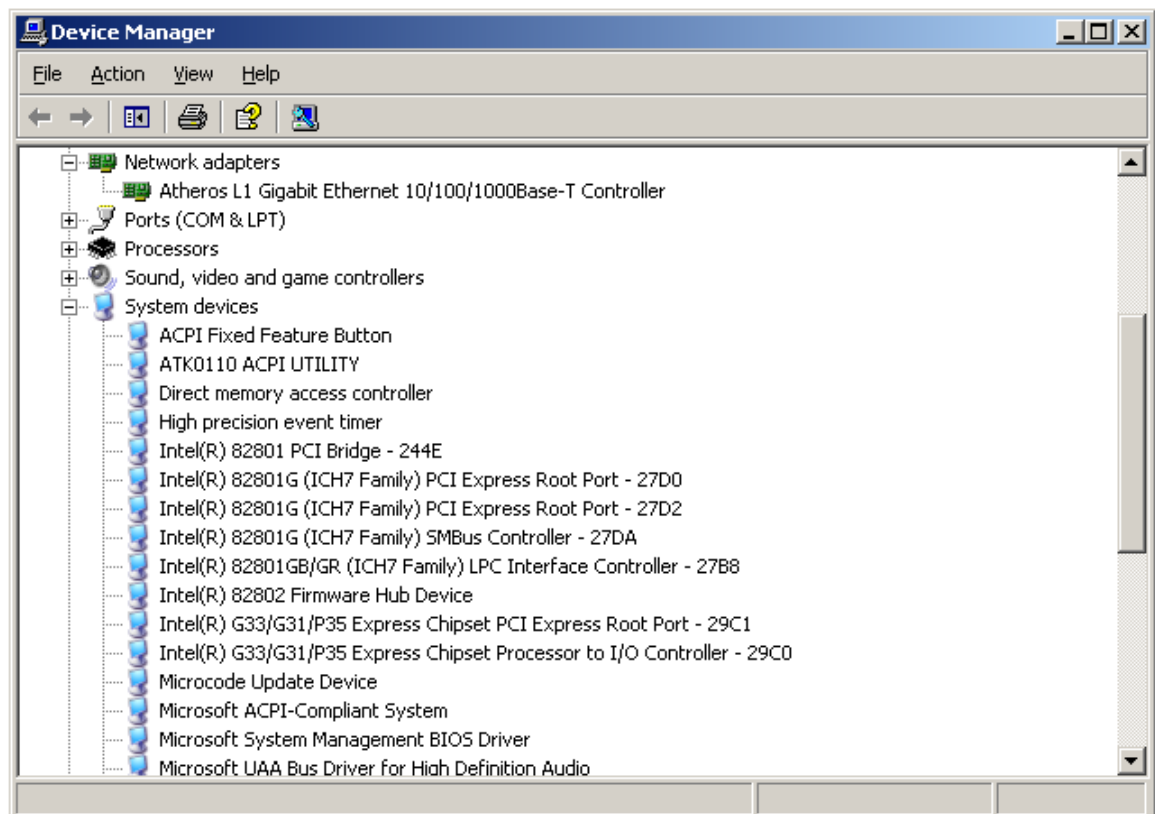
The first Ndis port has disappeared from the “**Network adapters**” list. Try the above steps to uninstall the other Ndis port.



After uninstalling Ndis Miniport’s driver now uninstall the Virtual Bus Driver. Right click on “**Chelsio Ethernet Functional Enumerator**” and click on “**Uninstall**”.



Click on “OK” button.



“Chelsio Ethernet Functional Enumerator” disappeared from the “System devices” list. So the Virtual Bus Driver has uninstalled successfully.

Assigning IP address to the Chelsio Ethernet Adapter

1. Double click on the Network Connections icon and choose the Chelsio card entry and double click it.
2. Click on the Properties button from the Local Area Connection X Status.
3. Select “Internet Protocol (TCP/IP)” from the list and click on Properties button below it.
4. From the Internet Protocol (TCP/IP) Properties window, assign an IP Address (e.g. 192.169.1.10) and subnet mask (e.g. 255.255.255.0).
5. Click on Ok and close on the other window.
6. Check to see if you can ping to some other address on this subnet.

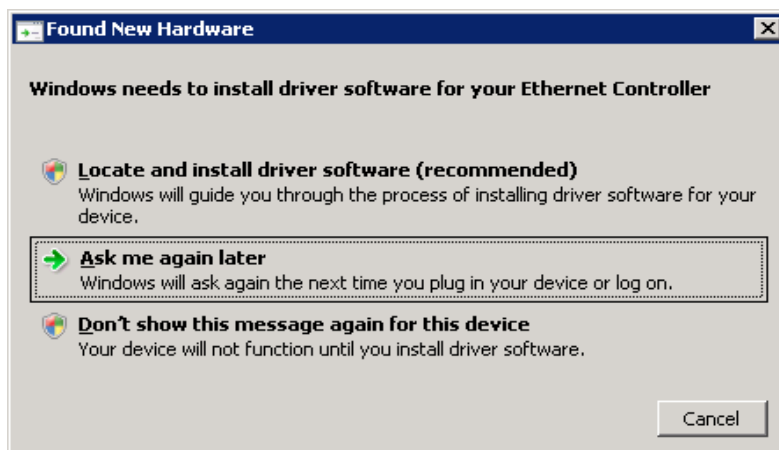
Software Installation Guide for Win2k8, Vista, Win2k8 R2, Win 7

The Chelsio Ethernet driver currently has two components.

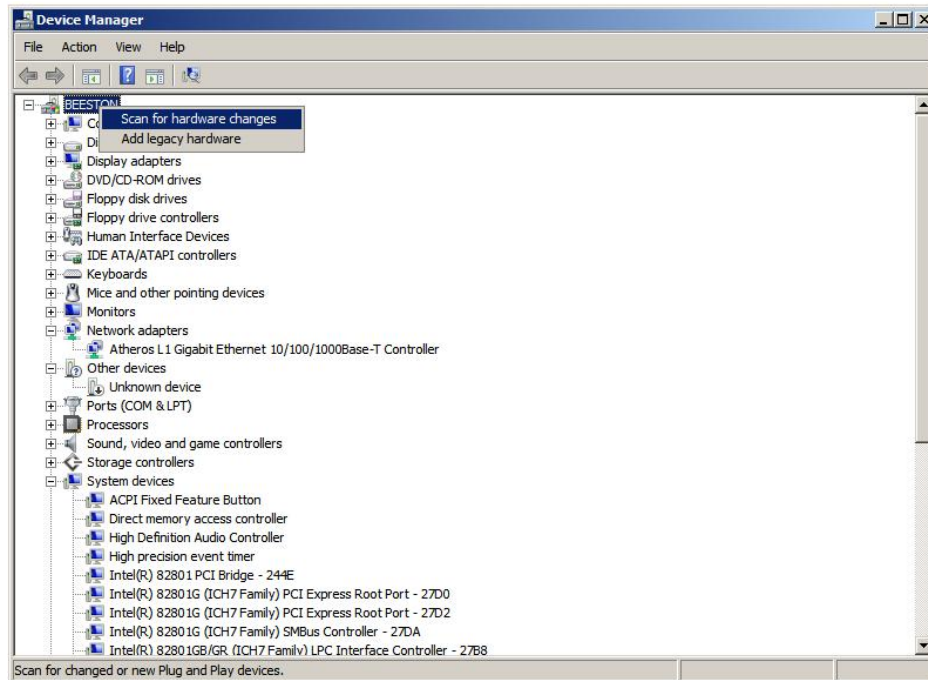
1. Chelsio S320/S310/S302 Virtual Bus Driver (ch_vbd.sys)
2. Chelsio S320/S310/S302 Ndis Miniport Driver (cxge3.sys)

Please install the components in the order they are being described here.

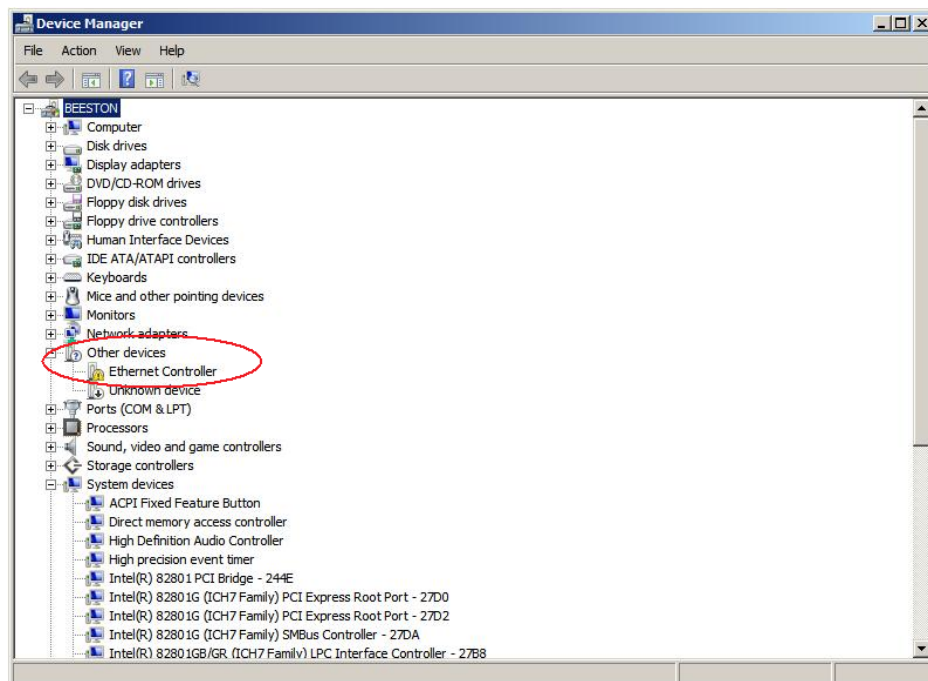
Virtual Bus Driver Installation



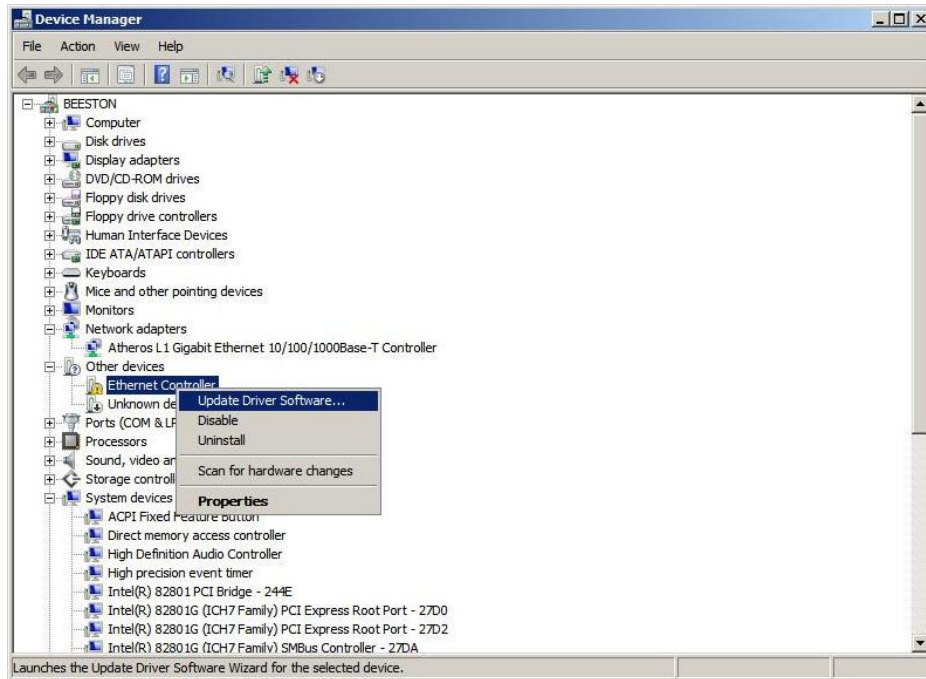
If the PC has just been booted up with the Chelsio NIC card, you will see the Hardware Wizard like above, press the “**Cancel**” button.



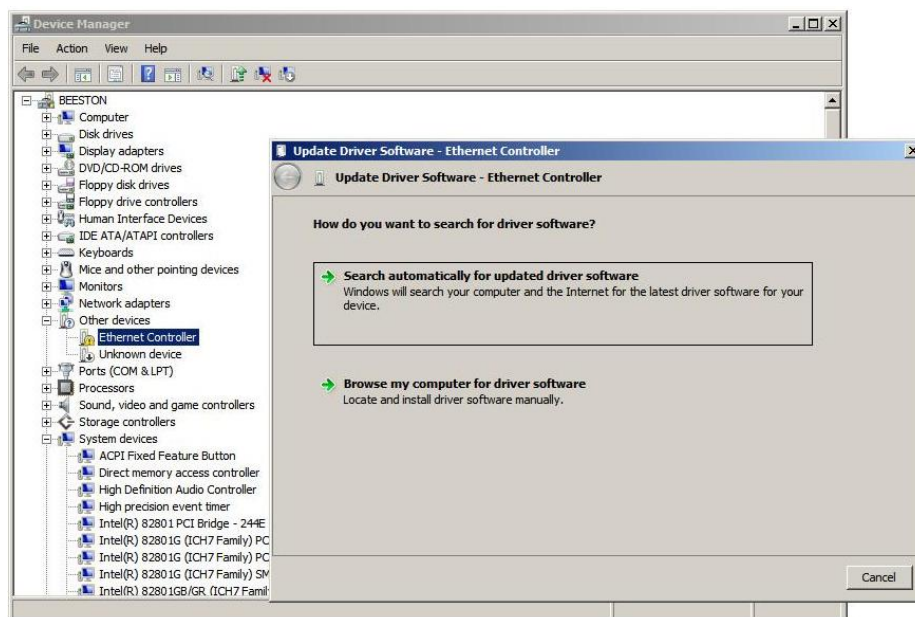
Open Device Manager, right click on the host name and click on “**Scan for hardware changes**” it will scan for PNP compliant hardware.



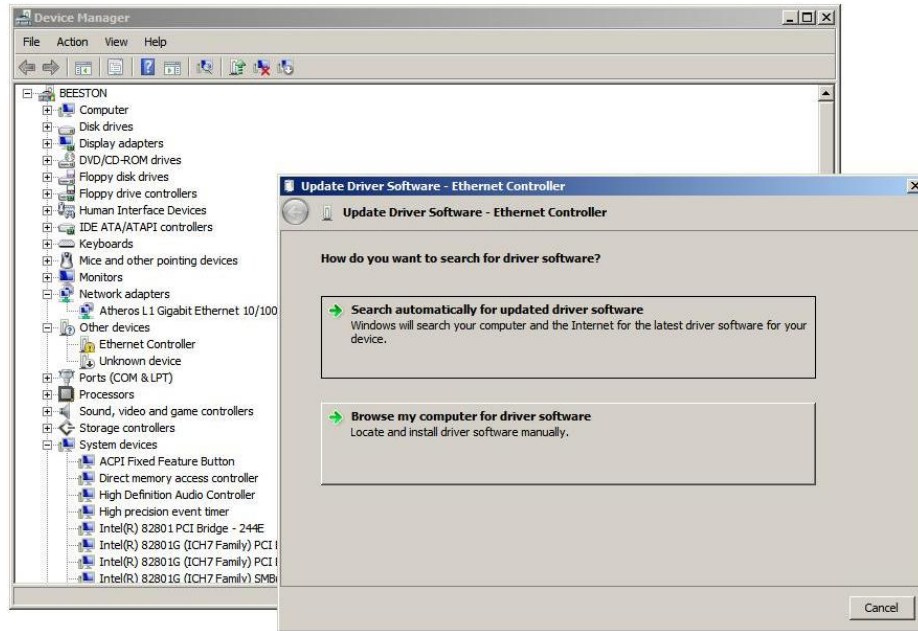
After scanning for hardware changes the device manager ends up with the “**Ethernet Controller**” icon in the “**other devices**” like above.



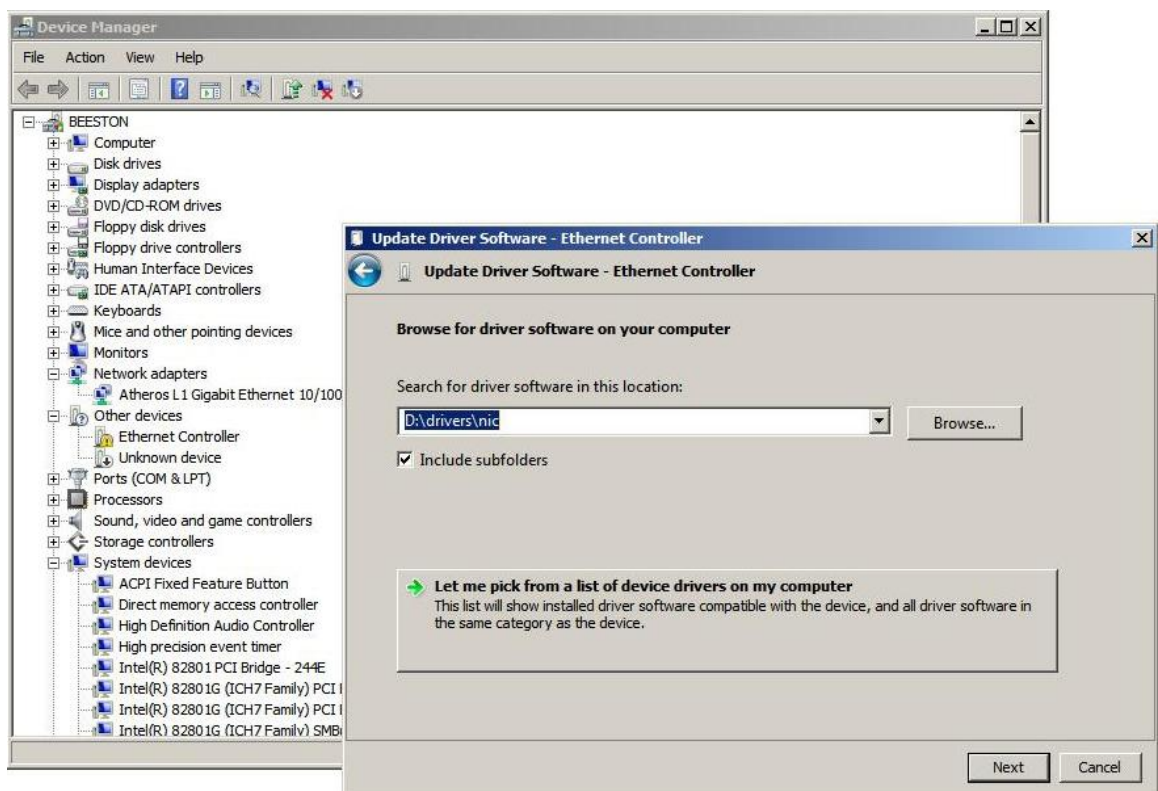
Right click on the “**Ethernet controller**” and click on “**Update Driver Software...**”.



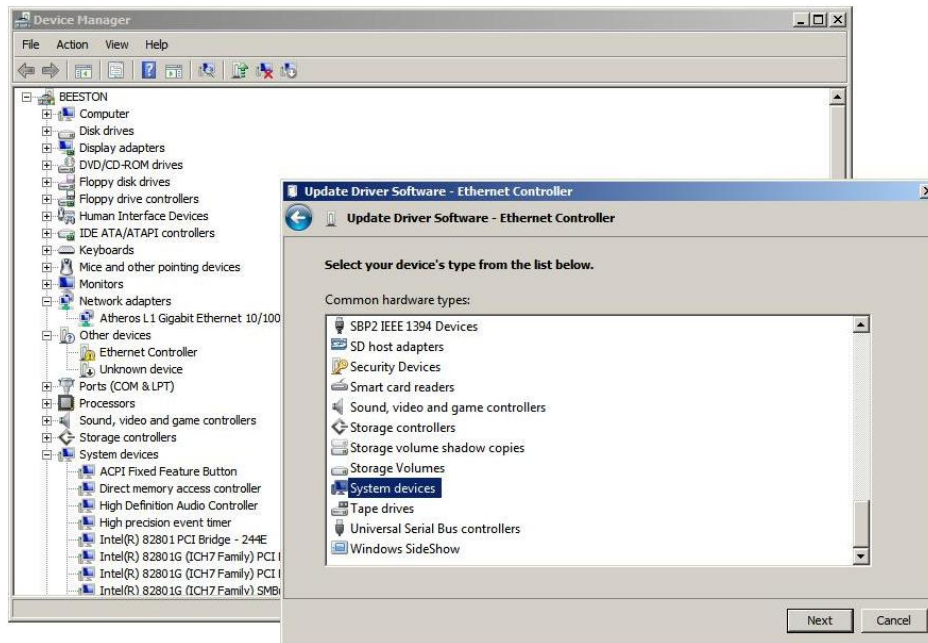
Once you click on “**Update Driver Software...**” it will open up the Update Driver Software Wizard.



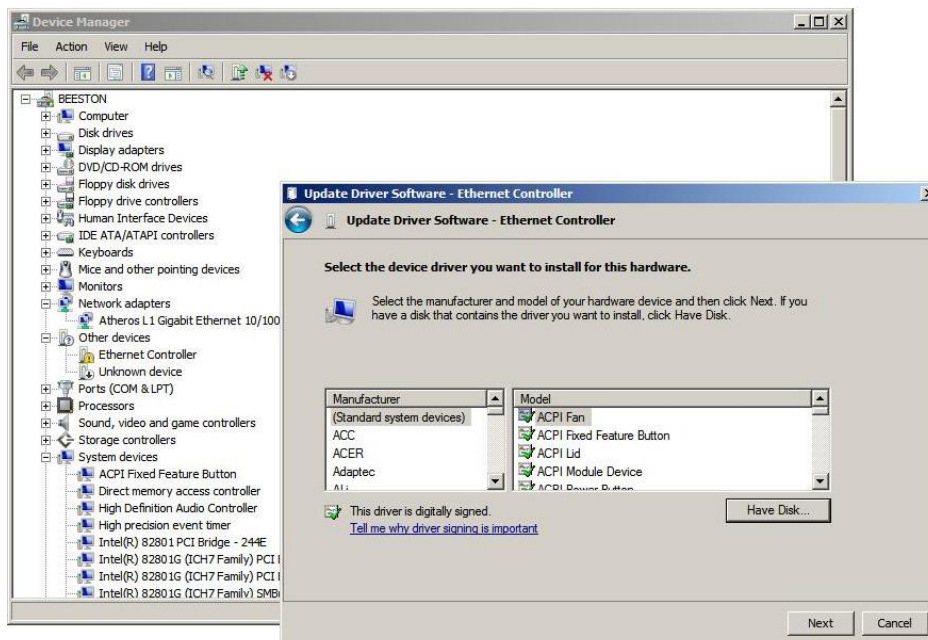
Click on **‘Browse my computer for driver software’** option.



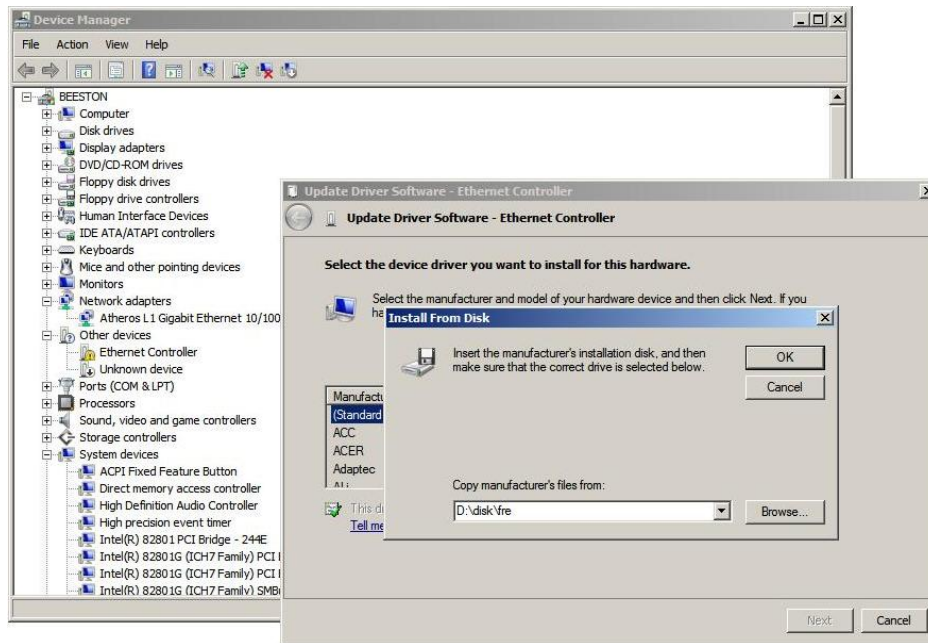
Click on **“Let me pick from a list of device drivers on my computer”** option.



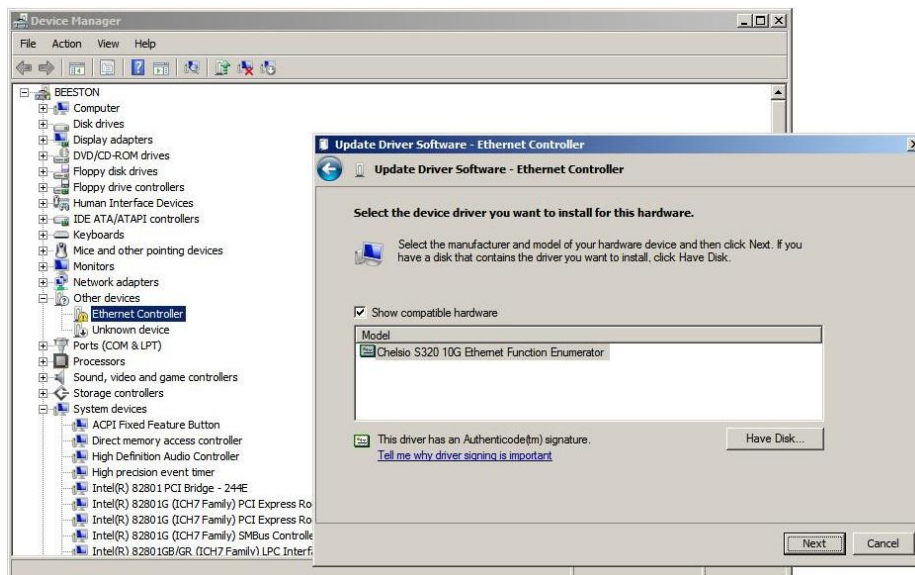
Select the “System devices” and Click “Next”.



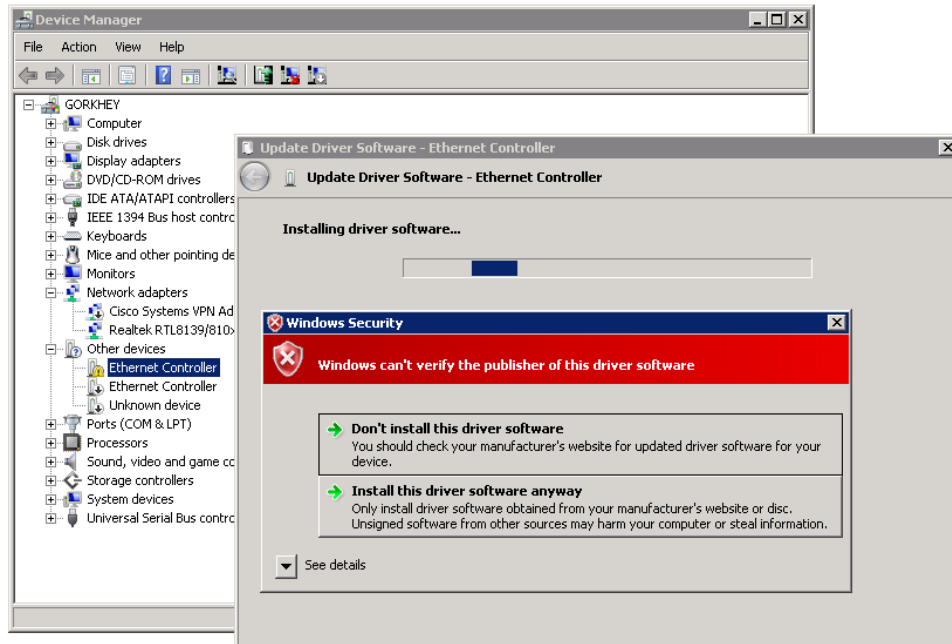
Click on “Have Disk...” button.



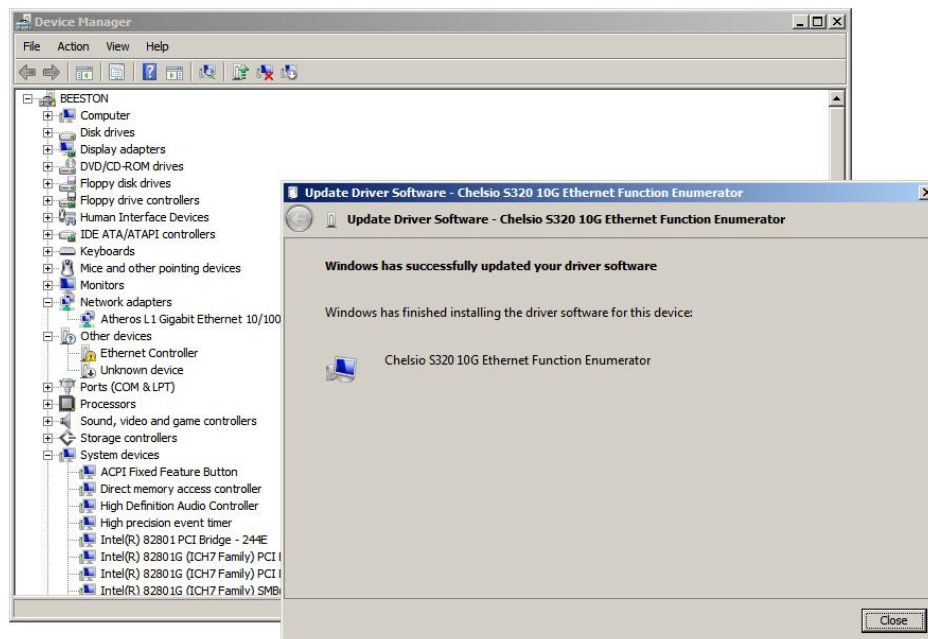
Browse for the “**ch_vbd.inf**” file and click “**Open**” and then press “**OK**”.



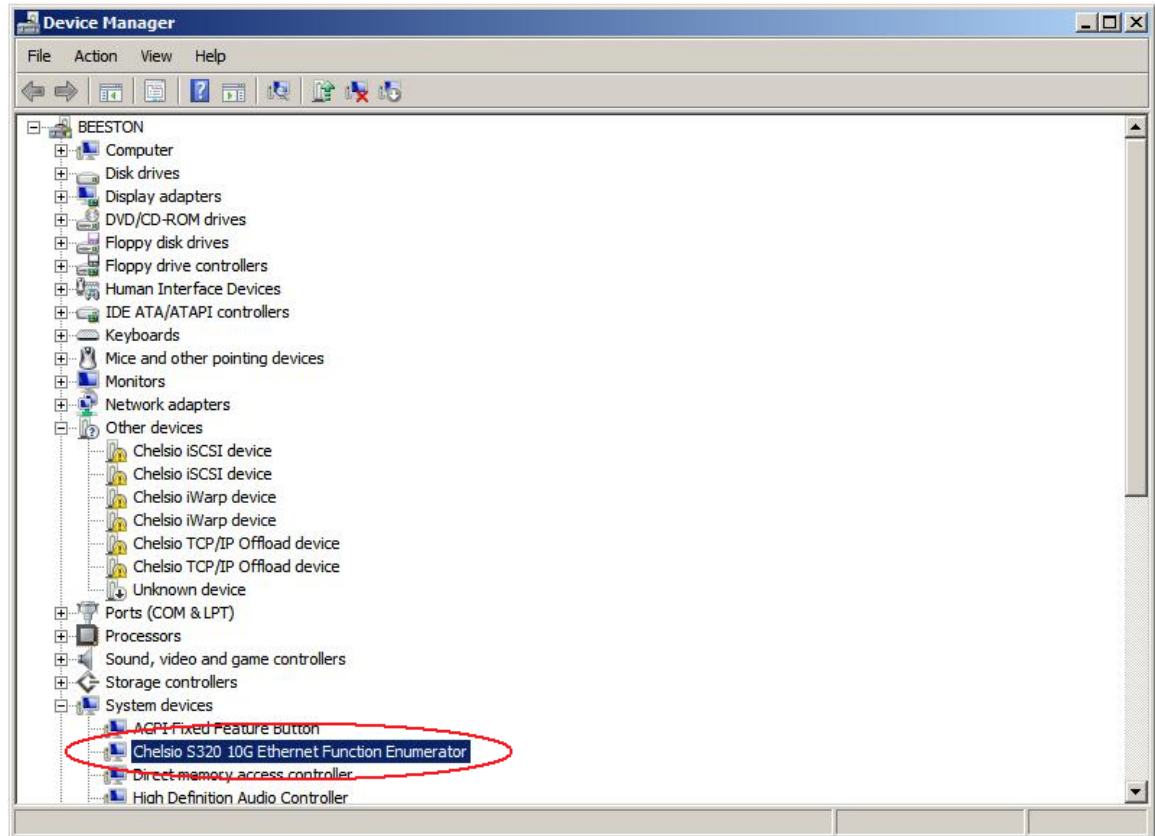
The Hardware Wizard will show the “**Chelsio Ethernet Function Enumerator**” in the list. Select this entry and click “**Next**”.



Click on **“Install this driver software anyway”** if it complains about the driver signature, else,

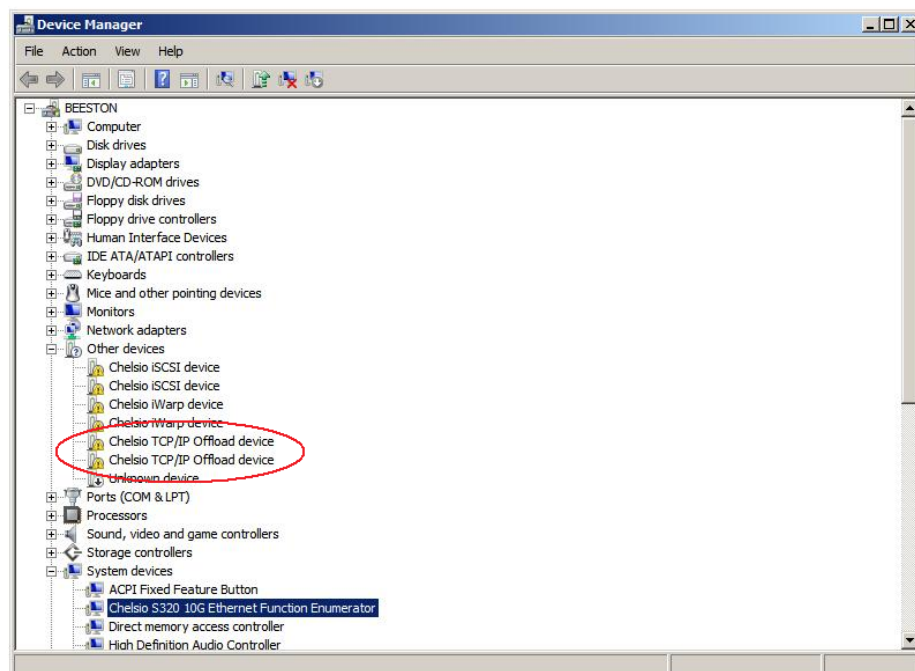


Click **“Close”** button.

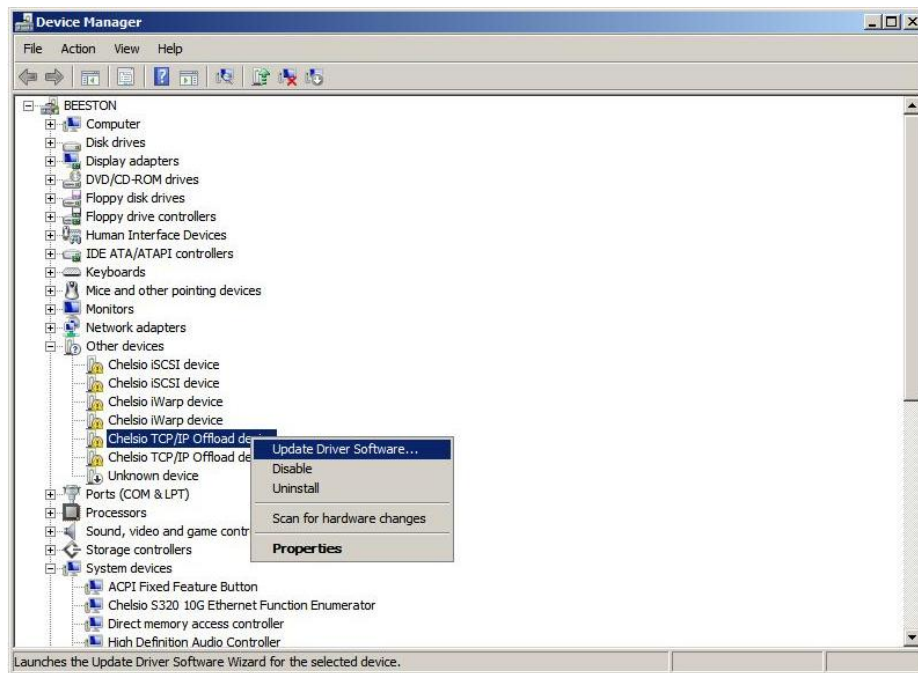


You have successfully installed the Virtual Bus Driver, once you see in the list of system devices like above.

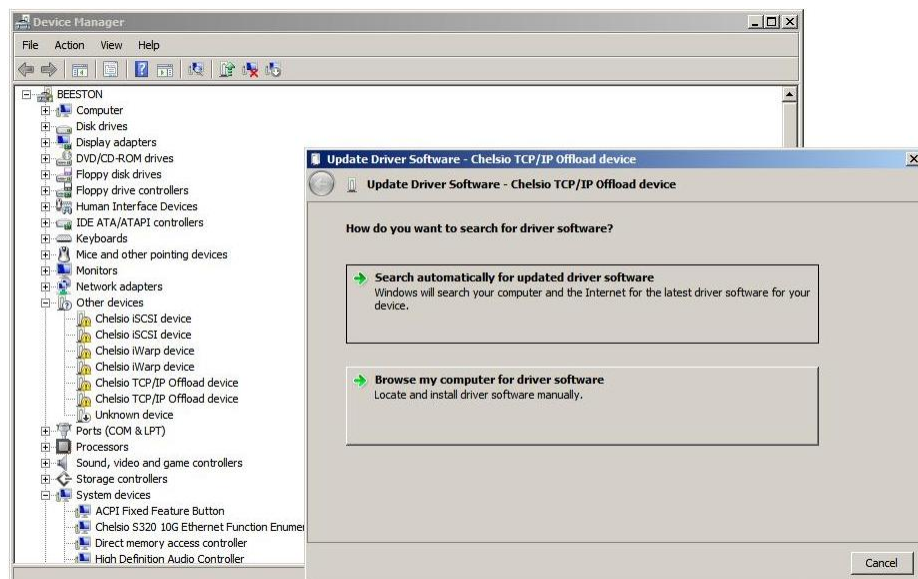
NDIS Miniport Installation



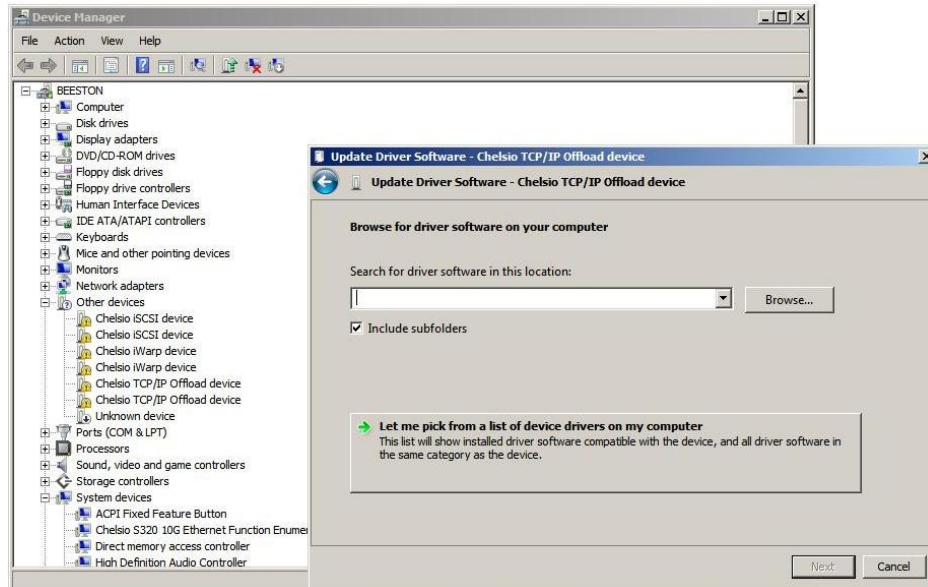
Once Windows has installed the Virtual Bus Driver, it will automatically enumerate the network adapter.



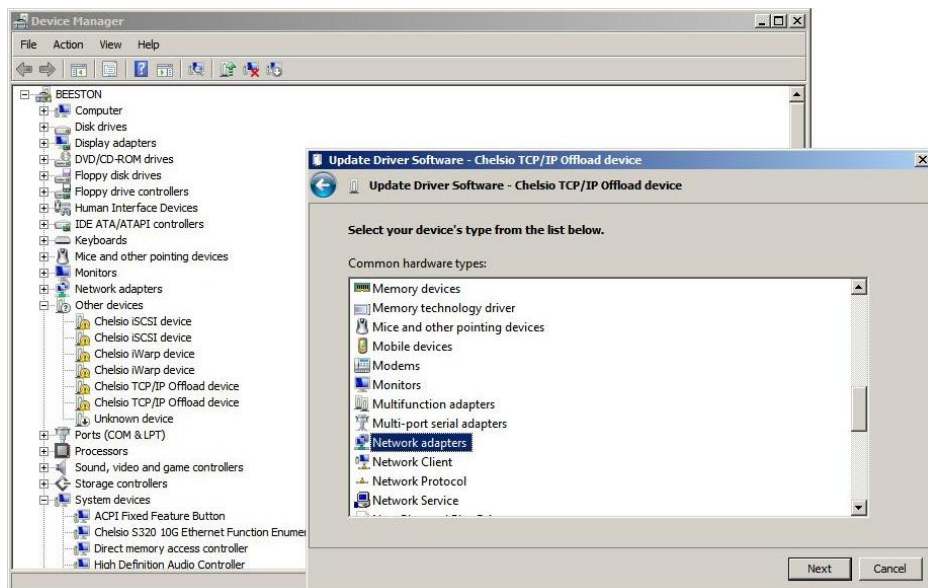
Right click on “Chelsio TCP/IP Offload device” and click on “Update Driver Software...”



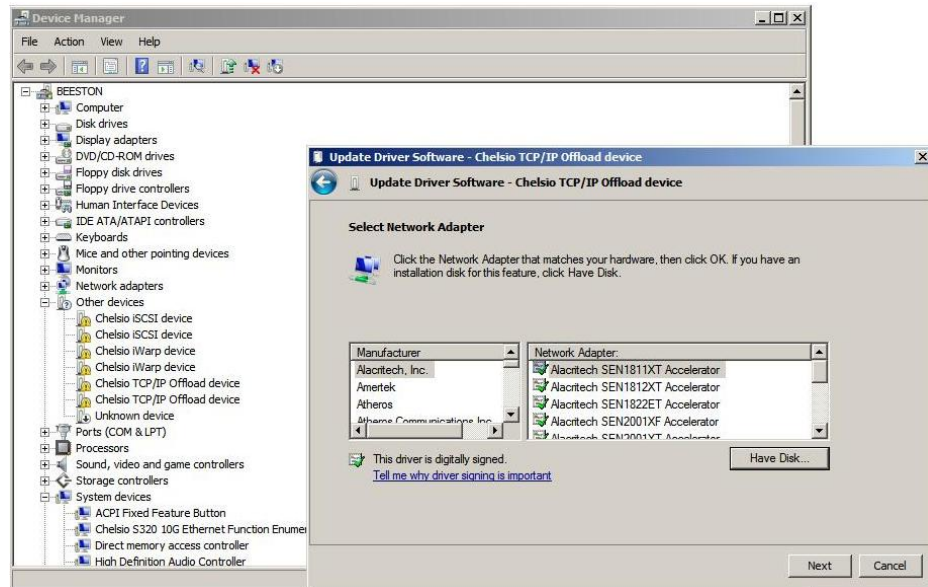
Click on ‘Browse my computer for driver software’ option.



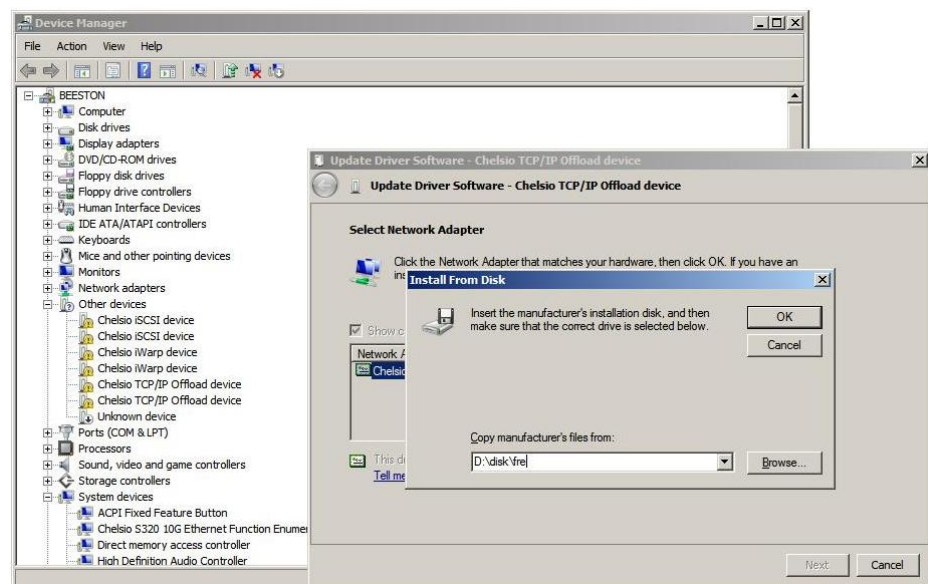
Click on ‘Let me pick from a list of device drivers on my computer’ option.



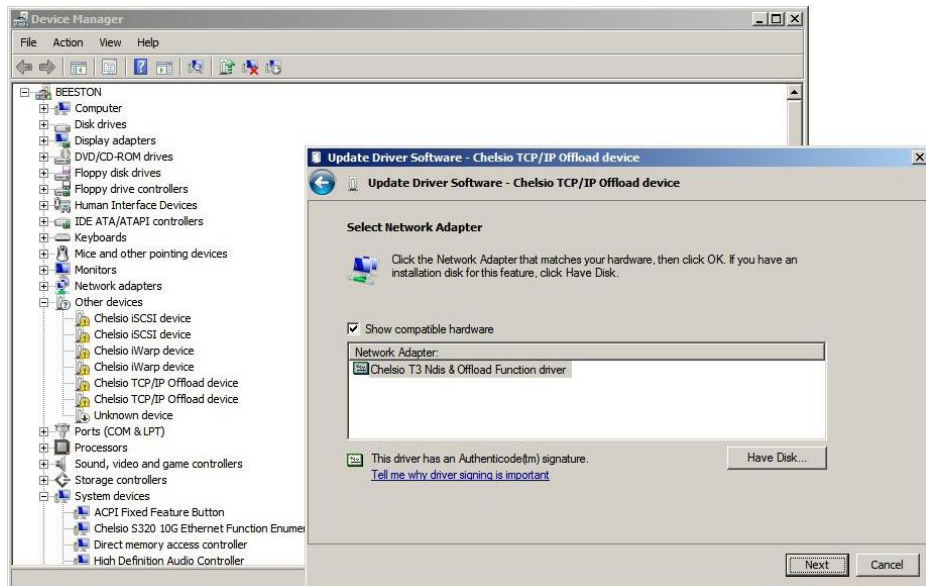
Select “**Network Adapters**” from the list and Click “**Next**”.



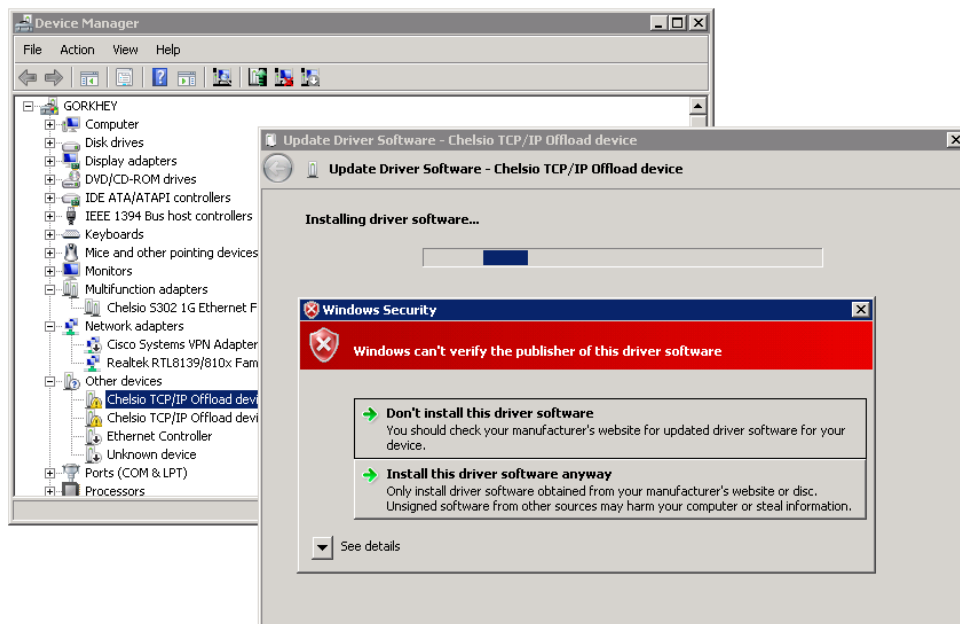
Click on “**Have Disk...**” button.



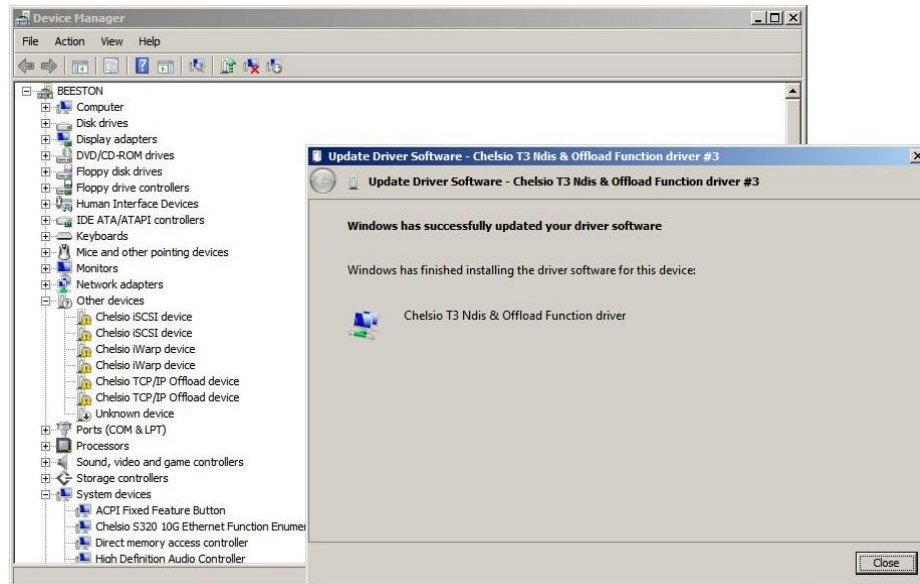
Browse for the “**cxge3.inf**” file and click “**Open**” and then press **OK**.



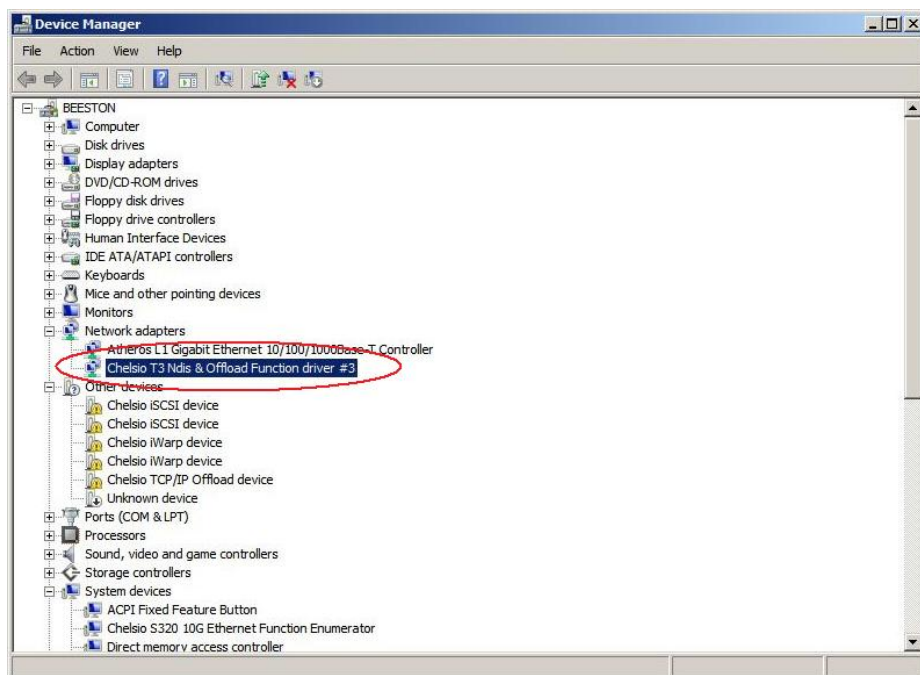
The Hardware Wizard will show the “**Chelsio T3 Ndis & Offload Function driver**” in the list. Select this entry and click “**Next**”.



Click on “**Install this driver software anyway**” if it complains about the driver signature, else,

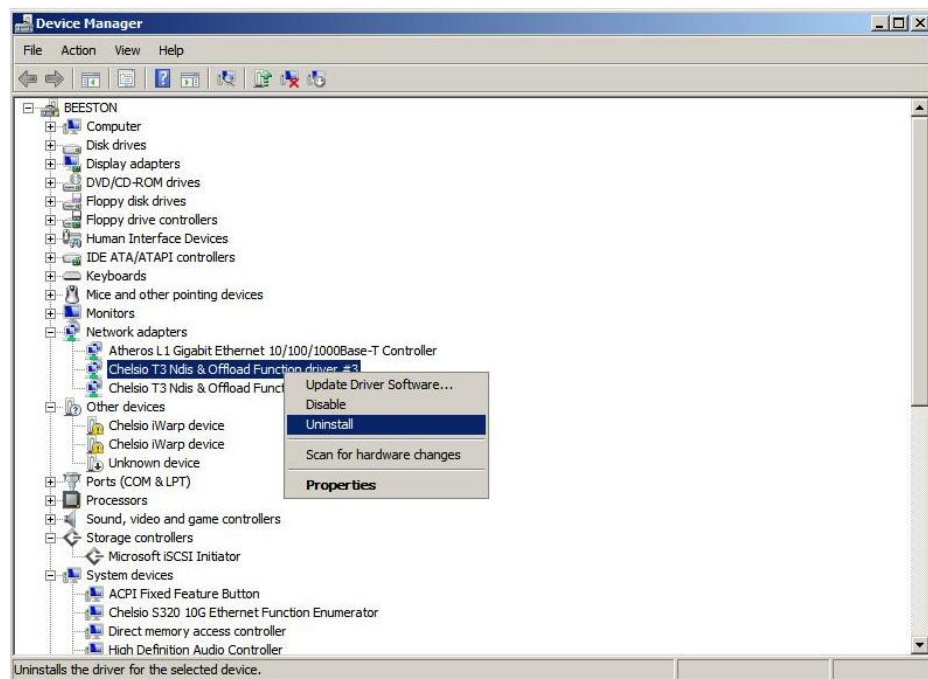


Click on “Close” button.

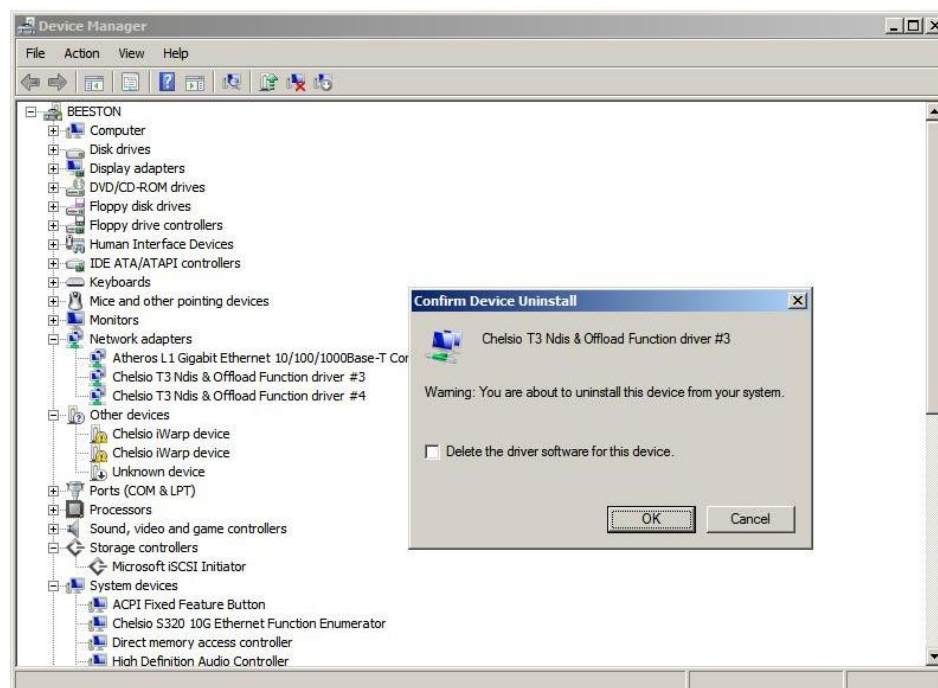


If the NDIS Miniport is installed successfully, you will find “**Chelsio T3 Ndis and Offload Functional Driver**” in Network Adapters. Continue the same steps for the other NDIS port.

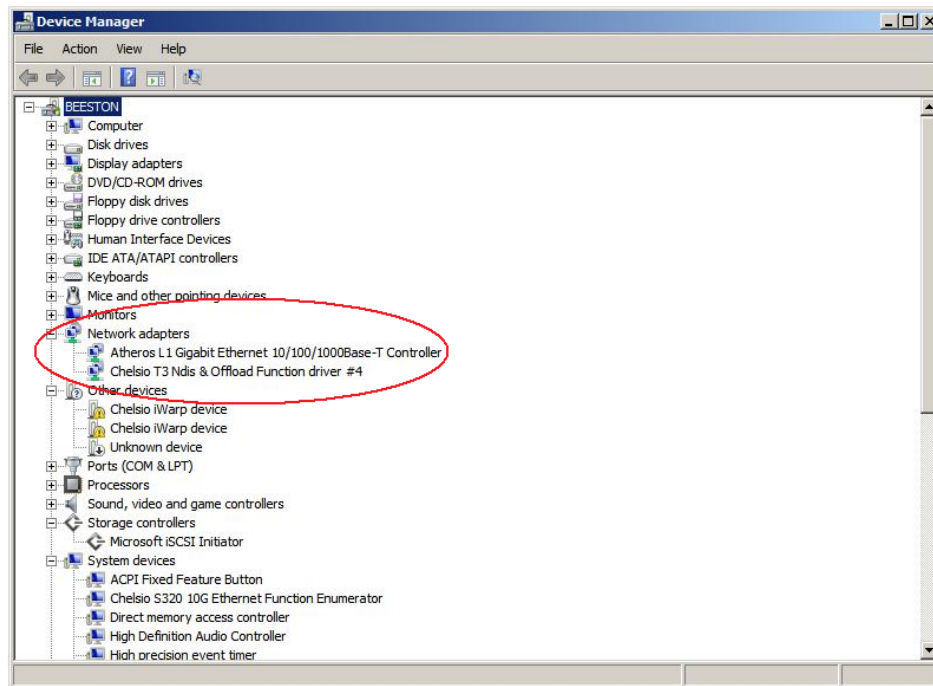
Uninstallation of NDIS Miniport:



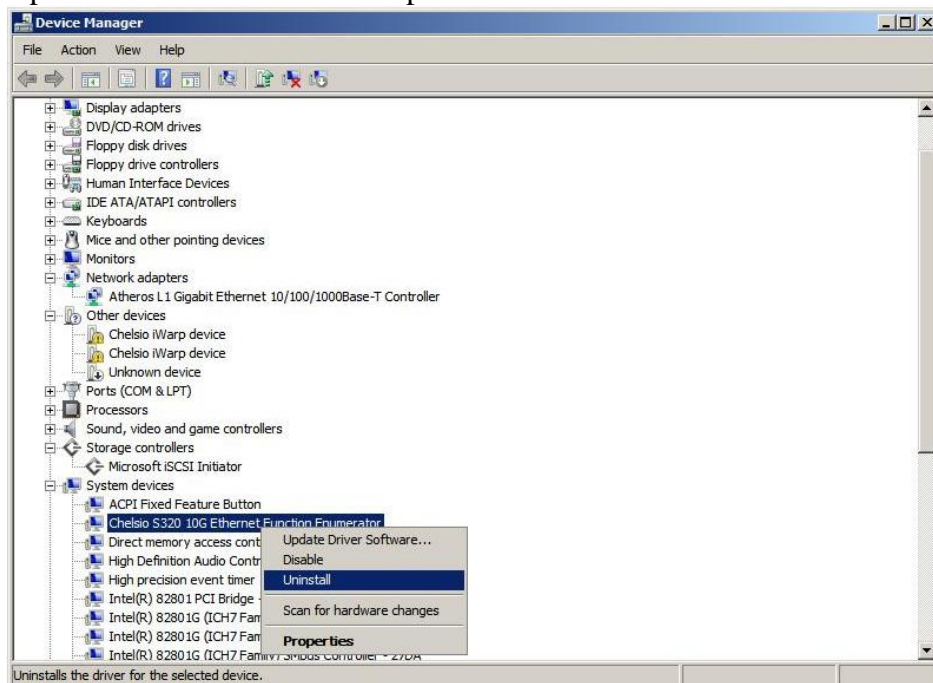
In order to uninstall the NDIS Miniport Driver, open device manager right click on the “**Chelsio T3 Ndis & Offload Function**” and click on “**Uninstall**” option.



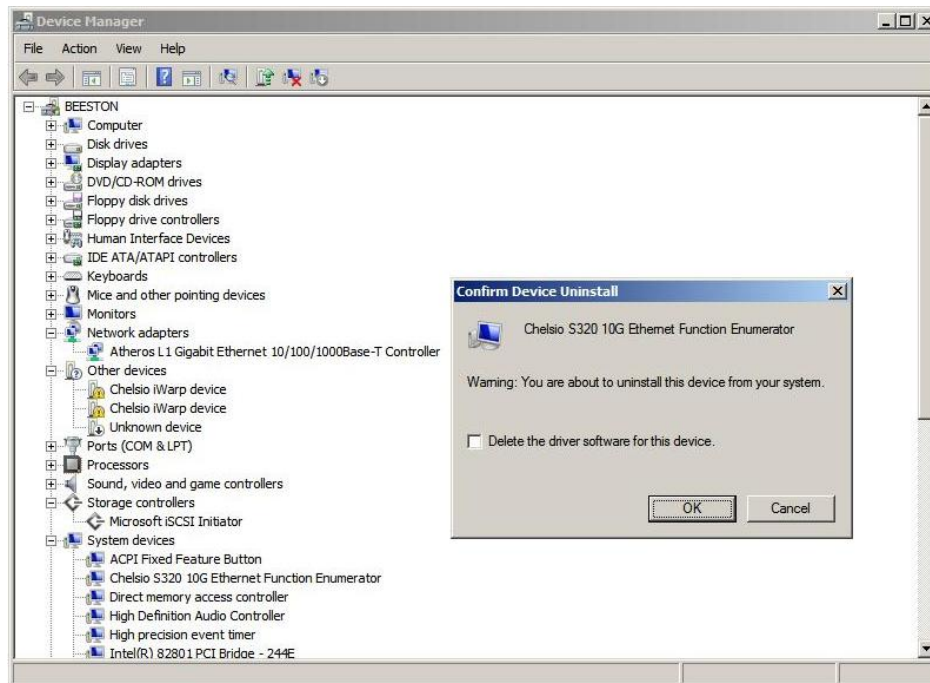
Click on “**OK**” button.



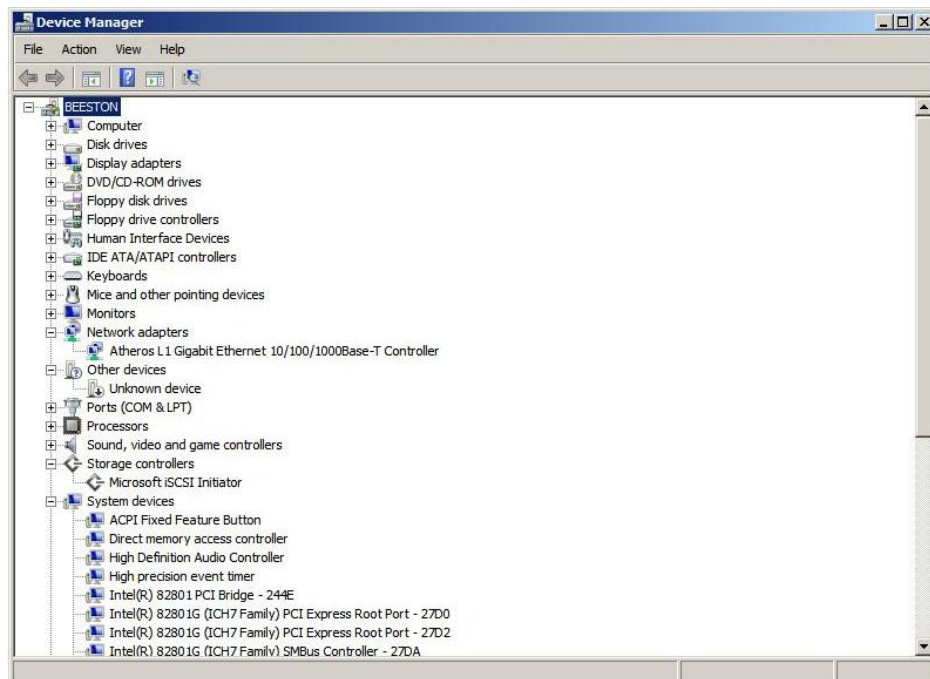
The first Ndis port has disappeared from the “**Network adapters**” list. Try the above steps to uninstall the other Ndis port.



After uninstalling Ndis Miniport’s, now uninstall the Virtual Bus Driver. Right click on “**Chelsio Ethernet Functional Enumerator**” and click on “**Uninstall**”.



Click on “OK” button.



“Chelsio Ethernet Functional Enumerator” disappeared from the “System devices” list. So the Virtual Bus Driver has uninstalled successfully.

Assigning IP address to the Chelsio Ethernet Adapter

3. Double click on the Network Connections icon and choose the Chelsio card entry and double click it.
4. Click on the Properties button from the Local Area Connection X Status.
5. Select “Internet Protocol (TCP/IP)” from the list and click on Properties button below it.
6. From the Internet Protocol (TCP/IP) Properties window, assign an IP Address (e.g. 192.169.1.10) and subnet mask (e.g. 255.255.255.0).
7. Click on Ok and close on the other window.
8. Check to see if you can ping to some other address on this subnet.

Driver Configuration

The Chelsio Ethernet driver provides advanced configuration options under the Device Properties. In the Network Connections window, select the Chelsio Adapter’s Local Area Connection interface (right-click -> properties). Click the Configure button.

VBD Driver Parameters

To see all tunable VBD driver parameters, open the Device Manager (Start > Control Panel -> System -> Hardware -> device Manager), click on the “System Devices”, double click the “Chelsio S3xx-E 10G Ethernet Function Enumerator”, and then click the “Advanced” tab.

The VBD driver tunable parameters are defined as:

- **Adapter Update Mode:**
 - *Description:* If enabled, the adapter is put in “Update Mode” in which driver performs bare minimum init on HW, which allows reload firmware, EEPROM, etc. User sets this mode when the adapter is in a “bad” status and user wants to recover the adapter, e.g., to an earlier known working firmware. If disabled, the adapter is in “Normal” operation mode.
 - *Range:* Enable / Disable
 - *Default:* Disable
- **Ethernet Port 0 MTU:**
 - *Description:* Specifies the MTU size of physical port 0 in bytes.

- *Range:* 1500 – 9000
- *Default:* 1500
- **Ethernet Port 0 Queue Sets:**
 - *Description:* Specifies the number of Rx queues to use to receive ingress packets.
 - *Range:*
 - 1-8 if single-port card,
 - 1-4 if dual-port card,
 - 1-2 if quad-port card,
 - *Default:* 2
 - *Note:* if 1, the RSS function is disabled. OS will use one CPU to serve queue 0 which receives all ingress packets.
- **Ethernet Port 0 Speed & Duplex:**
 - *Description:* Specifies the Port 0 operation speed and mode.
 - *Range:*
 - 10G Full-duplex
 - 1G Full-duplex
 - 1G Half-duplex
 - 100M Full-duplex
 - 100M Half-duplex
 - 10M Full-duplex
 - 10M Half-duplex
 - Auto Detect
 - *Default:* Auto Detect
 - *Note:* For 10G-SR, LR, and CX-4 interfaces, the IEEE standards only specified full-duplex operation. Auto-negotiation and half-duplex are not supported in these standards. Therefore, for these 10G interfaces, the Auto-Detect will automatically park at 10G-Full-Duplex mode, and all other values are invalid. For 1G port, however, user can specify any of the above 1G, 100M, 10M, full or half duplex modes. If Auto-Detect selected, the 1G port will do auto-negotiation.
- **Ethernet Port 0 NDIS Function**
 - *Description:* Allows for the enumeration of a Chelsio network driver
 - *Range:* Disabled, Nic mode, Offload mode
 - *Default:* Offload mode
 - *Note:* Offload mode configures the adapter to support TCP offload to be used by the network, storage or iWarp drivers. This property should not be changed unless running into extremely low memory situations and offload functionality of the adapter will never be used.
- **Ethernet Port 0 iSCSI Function**
 - *Description:* Allows for the enumeration of a iSCSI driver above the VBD
 - *Default:* Enabled

- *Note:* This should be only enabled if the release package contains the chiscsi.sys files and if iSCSI functionality is desired.
- **Ethernet Port 0 iWarp Function**
 - *Description:* Allows for the enumeration of an iWARP driver above the VBD.
 - *Range:* Enabled | Disabled
 - *Default:* Enabled
 - *Note:* This should be only enabled if the release package contains the chiwarp.sys files and if WSD functionality is desired.
- **Ethernet Port 1 xxxxx**
 - If the second physical port is enabled, its above parameters are repeated here.
- **Port 0 Rx Pause Frame Support:**
 - *Description:* Controls the enable or disable of Ethernet 802.3x Rx flow control for port 0. If enabled, all incoming PAUSE frames will be recognized, otherwise, all incoming PAUSE will be dropped.
 - *Range:* Enabled | Disabled
 - *Default:* Enabled
- **Port 0 Tx Pause Frame Support:**
 - *Description:* Controls the enable or disable of Ethernet 802.3x Tx flow control for port 0. If enabled, the HW will send PAUSE frames when its MAC Rx FIFO usage is beyond a high-watermark. If disabled, no PAUSE will be sent, when Rx MAC FIFO gets full, further ingress packets will be dropped.
 - *Range:* Enabled | Disabled
 - *Default:* Enabled
- **Port 1 XX Pause Frame Support:**
 - If the second physical port is enabled, its Pause Frame Support parameters are repeated here.
- **Qset FreeList Jumbo Queue Size:**
 - *Description:* Specifies the Rx queue size for jumbo frames
 - *Range:* 128-4096
 - *Default:* 512
- **Qset FreeList Regular Queue Size:**
 - *Description:* Specifies the Rx queue size for standard 1500B frames
 - *Range:* 128-4096
 - *Default:* 512
- **Qset TOE Control Queue Size:**
 - *Description:* Specifies the Tx queue size for TOE Control queue
 - *Range:* 128-4096
 - *Default:* 1024

- *Note:* this is only used by Chimney Miniport
- **Qset TOE Data Queue Size:**
 - *Description:* Specifies the Tx queue size for TOE Data queue
 - *Range:* 128-4096
 - *Default:* 1024
 - *Note:* this is only used by Chimney Miniport
- **Qset Tunnel Queue Size:**
 - *Description:* Specifies the Tx queue size for non-TOE ether frames.
 - *Range:* 128-4096
 - *Default:* 4096

NDIS Miniport Driver Parameters

The NDIS Miniport Driver tunable parameters are listed in “Device Manager -> Chelsio T3 NDIS Function Driver -> Advanced” category.

- **IPv6 Checksum Offload:**
 - *Description:* Controls the enable or disable of checksum offload for IPv6 packets.
 - *Range:* Enabled / Disabled
 - *Default:* Enabled
- **Large Segment Offload (LSO):**
 - *Description:* Controls the enable or disable of sender side LSO function.
 - *Range:* Enabled / Disabled
 - *Default:* Enabled
- **Locally Administrated Address:**
 - *Description:* Specifies a new MAC address for the port. If Not Present, the default MAC from EEPROM is used. If specified, the new MAC overwrites the default MAC. This specified MAC is persistent across machine reboot.
 - *Range:* Not Present | Any legal 6-byte MAC address
 - *Default:* Not Present
- **Optimization mode:**
 - *Description:* Specified the mode of operation for the offload part of the driver. In performance mode the driver is tuned to give the best performance results. In compatibility mode the driver is tuned to pass the Sparta tests (WQHL) from Microsoft
 - *Range:* Performance Mode/ Compatibility mode.
 - *Default:* Performance Mode

- **Receive Checksum Offload:**
 - *Description:* Controls the enable or disable of checksum offload for ingress ether frames.
 - *Range:* Enabled | Disabled
 - *Default:* Enabled
- **Receive Side Scaling (RSS):**
 - *Description:* This parameter controls the RSS functions. If on, the Microsoft RSS function is enabled. If off, the Chelsio RSS function is enabled.
 - *Range:* Enabled | Disabled
 - *Default:* Disabled
 - *Note:* To use either Microsoft or Chelsio RSS functions, the VBD driver parameter “Ethernet Port 0 Queue Sets” must be set to greater than 1. Qset=1 totally disables the RSS function.
- **TCPOffload :**
 - *Description:* This parameter controls the RSS functions. If on, the Microsoft Chimney TCP Offload function is enabled
 - *Range:* Enabled | Disabled
 - *Default:*
 - Disabled, in NIC only driver.
 - Enabled, in Chimney driver.
 - *Note:* If TCP Offload is enabled please ensure that RSS is disabled.
- **Transmit Checksum Offload:**
 - *Description:* Controls the enable or disable of checksum offload for egress ether frames.
 - *Range:* Enabled | Disabled
 - *Default:* Enabled
- **VLAN ID:**
 - *Description:* If the previous “VLAN Insertion” is enabled, this parameter specifies the VLAN ID to be inserted.
 - *Range:* 0-4094
 - *Default:* 0