



T320/T310/T302 Chelsio Ethernet Adapter Teaming Driver
Installation and User's Guide for Microsoft® Windows®
Server™ 2003, Windows® XP and Windows® Vista.

Copyright 2008 Chelsio Communications, Inc. All rights reserved.
370 San Aleso Ave, Suite 100, Sunnyvale, CA 94085

This document and related products are distributed under licenses restricting their use, copying, distribution, and reverse-engineering. No part of this document may be reproduced in any form or by any means without prior written permission by Chelsio Communications.

N210 and N110 are trademarks of Chelsio Communications, Inc.
Microsoft, Windows, and Windows Server are either registered trademarks or trademarks of Microsoft Corporation.

THIS DOCUMENTATION IS PROVIDED "AS IS" AND WITHOUT ANY EXPRESS OR IMPLIED WARRANTIES, INCLUDING, WITHOUT LIMITATION, THE IMPLIED WARRANTIES OF MERCHANTABILITY AND FITNESS FOR A PARTICULAR PURPOSE.

THE USE OF THE SOFTWARE AND ANY ASSOCIATED MATERIALS (COLLECTIVELY THE "SOFTWARE") IS SUBJECT TO THE SOFTWARE LICENSE TERMS OF CHELSIO COMMUNICATIONS, INC.

Table of Contents

Table of Contents	3
Chelsio Teaming Driver Installation.....	4
1.1 Package Contents	4
1.2 Protocol Edge Installation.....	4
1.3 Configure Teams.....	7
2 Chelsio Teaming Command Line Utility.....	10

Chelsio Teaming Driver Installation

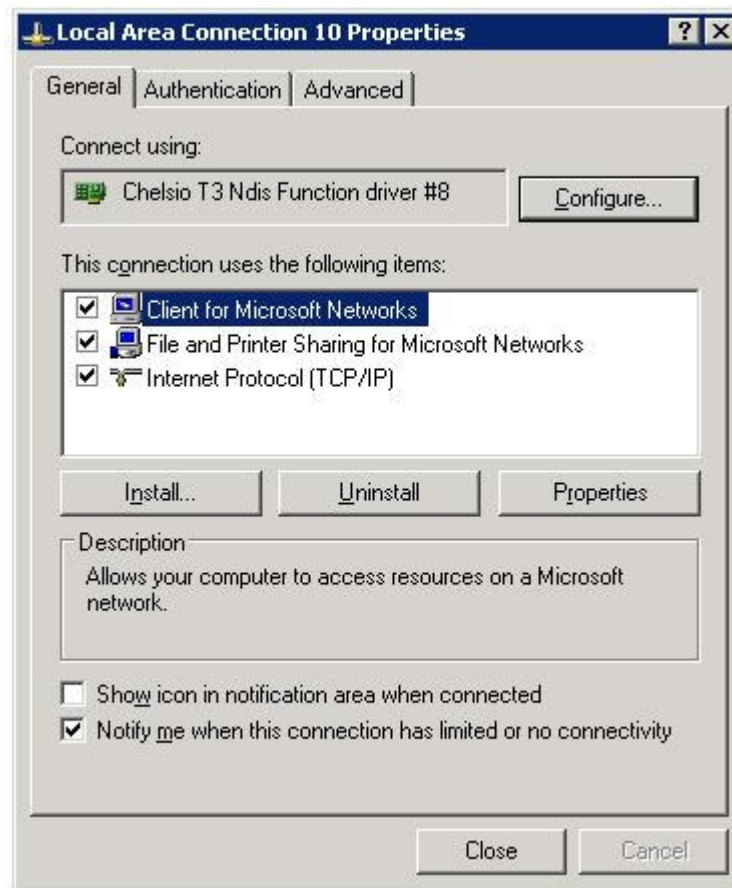
1.1 Package Contents

Chteam.inf – Chelsio Teaming driver protocol edge inf
Chteam_mp.inf – Chelsio Teaming driver miniport edge inf
Chteam.sys – Chelsio Teaming driver (NDIS MUX Intermediate driver)
ChTeamCfg.exe – Chelsio Configuration Utility to configure teams
ChTeamCmd.exe – Chelsio Configuration Utility to configure teams
ChTray.exe – Chelsio Tray Icon App.

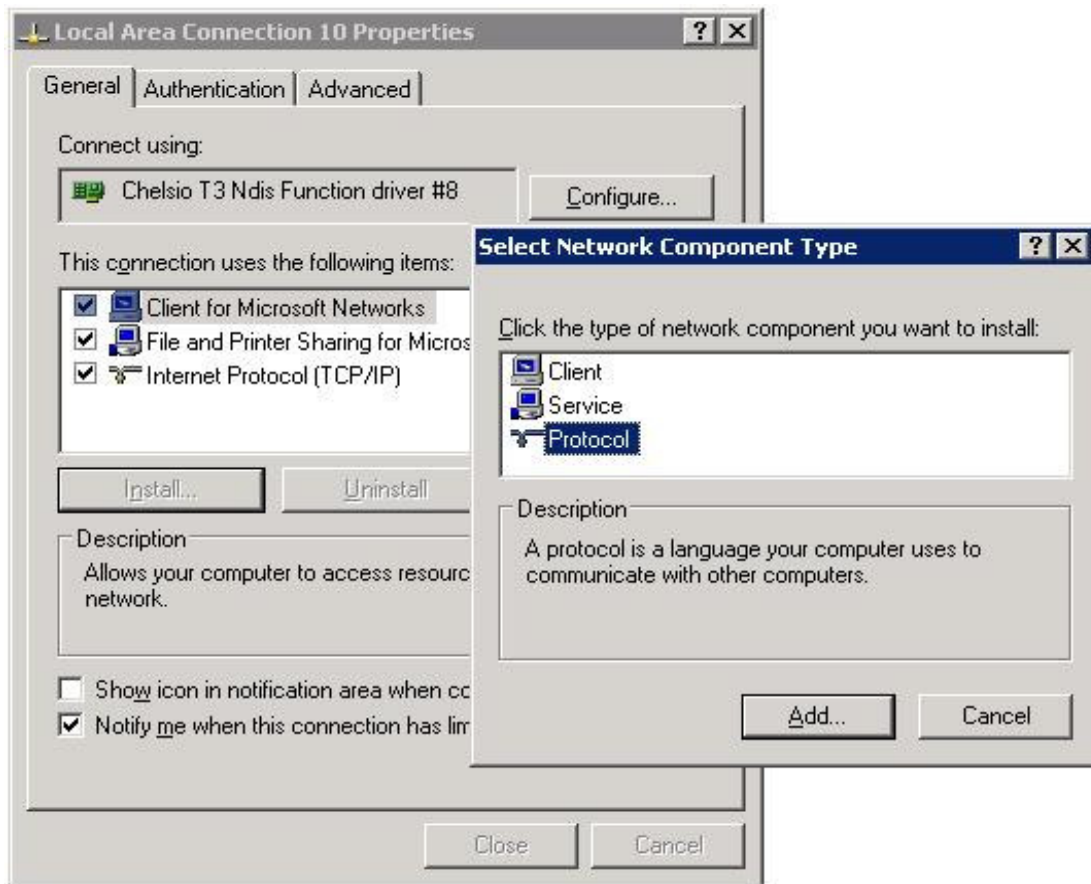
1.2 Protocol Edge Installation

To Install and Configure Teams, first step is to install the Chelsio Teaming Driver protocol edge. Follow the steps below to install the protocol edge of the Chelsio Teaming Driver.

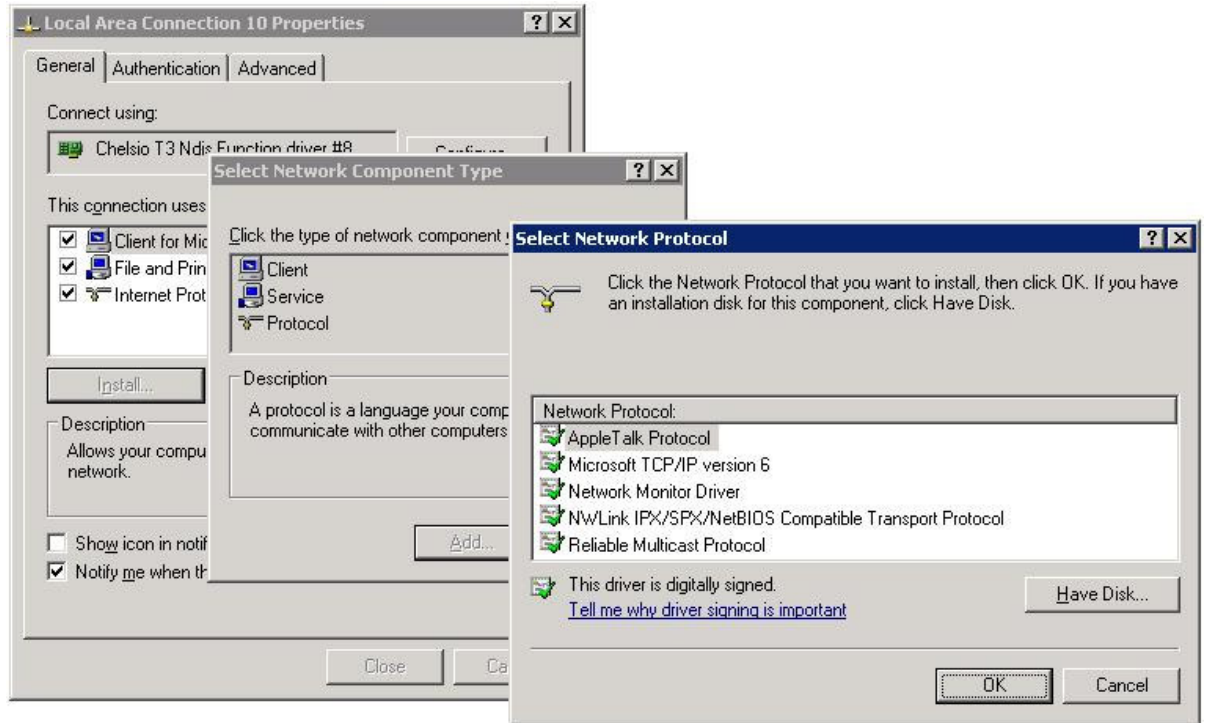
1. Launch “Network Connections”
2. Right click on any listed Local Area Connections and choose properties. For example, the figure below shows the “Local Area Connection 10” Properties.



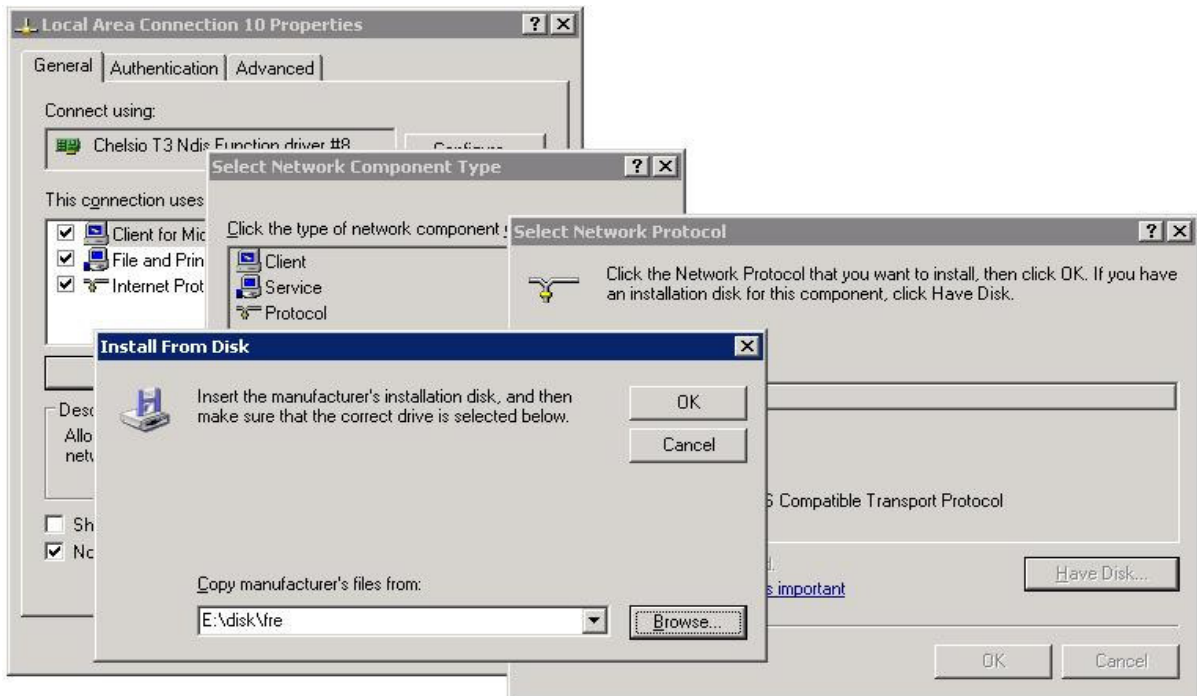
3. Click on “Install” on the “Local Area Connection Properties” and choose “Protocol” in the type of network component selection.



4. Click "Add" to add the protocol and "Select Network Protocol" windows pops up as shown below.

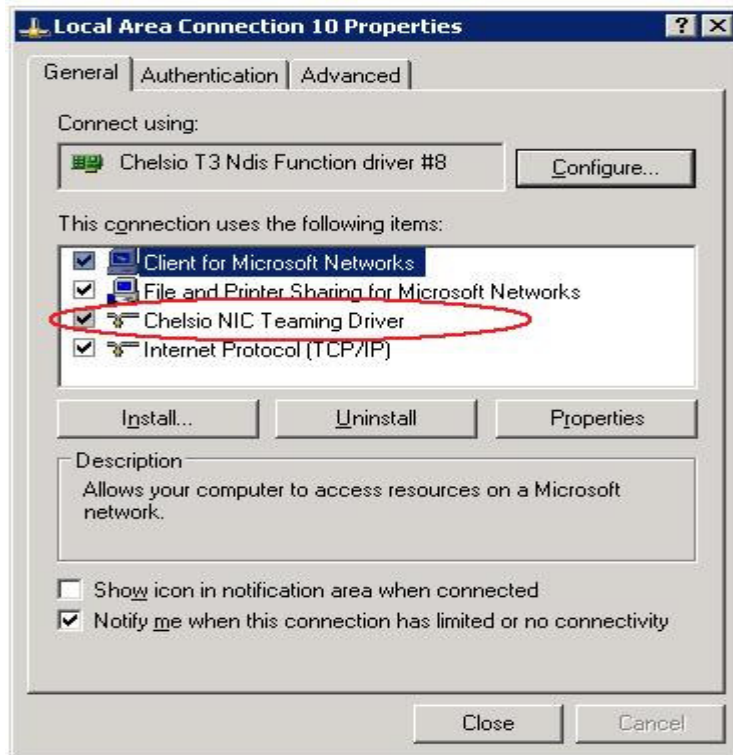


5. Click "Have Disk" and enter the path of the chteamp.inf in the "Install from Disk" windows OR click "Browse" to browse the package containing Chelsio Teaming Driver and point to chteamp.inf file.



6. Click "OK" on "Install from Disk" window.
7. Click "OK" on "Select Network Protocol" window.

8. The Chelsio Teaming Driver is now installed. Verify that “Chelsio NIC Teaming Driver” is present in the “Local Area Connection Properties” window as shown below.

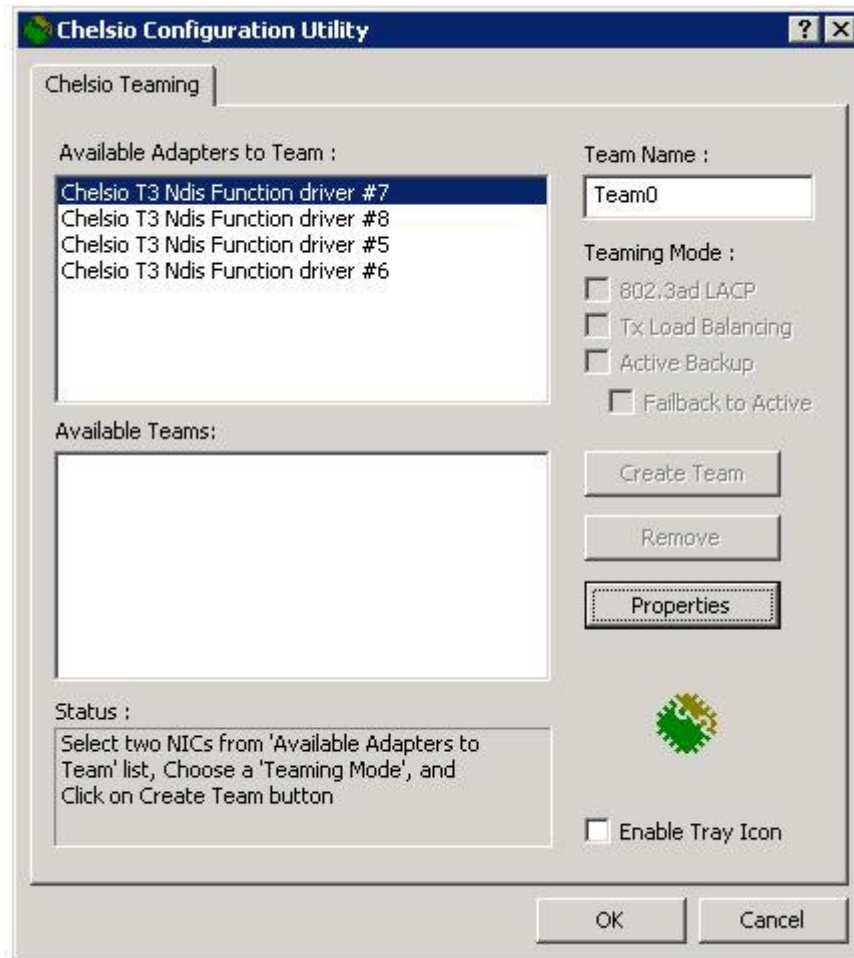


1.3 Configure Teams

Teams can be configured using Chelsio Configuration Utility.

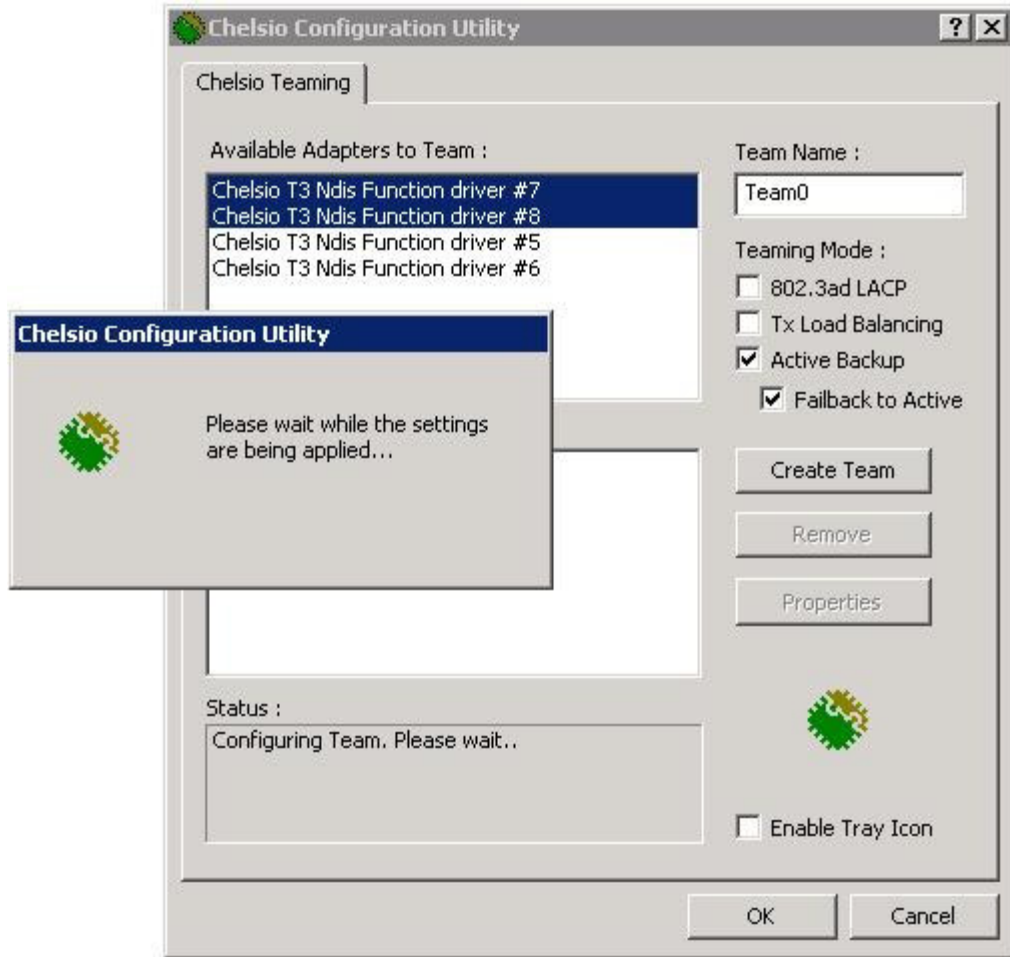
To launch Chelsio Configuration Utility:

1. Go to “Start->Run” command option.
2. Enter “ChTeamCfg.exe” to Open and the utility will be launched as shown below

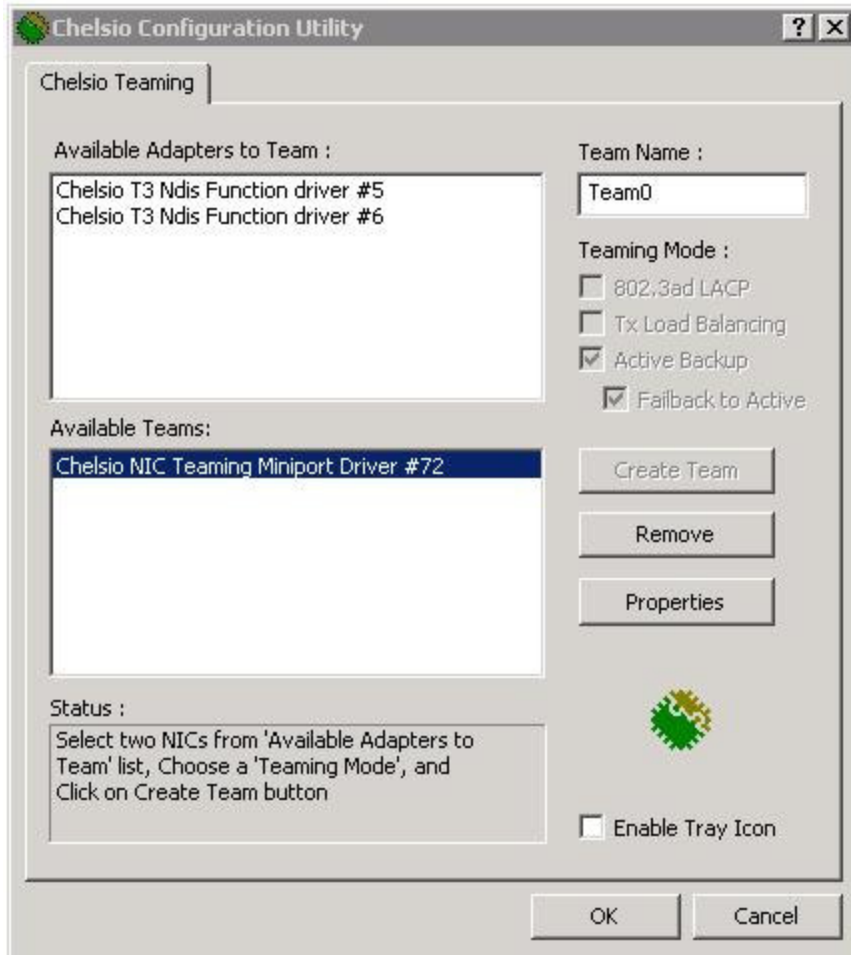


3. Select NICs from “Available Adapters to Team” list, Choose Teaming Mode and click on “Create Team” button to start creating the team.

(Example: In the below screenshot a team is being created with “Chelsio T3 Ndis Function driver #7” and “Chelsio T3 Ndis Function driver #8” NICs, in “Active Backup with Failback to Active” Teaming Mode).



4. The team will be created and will be listed in the "Available Teams" list as shown below. The underlying NICs that are used for creating team will be removed from the "Available Adapters to Team" list.



5. Click "OK" to close the Chelsio Configuration Utility.

2 Chelsio Teaming Command Line Utility

This utility is used to create, list and remove the teams in a system from the command line. Before using this tool the teaming driver should be installed in the system using the above mentioned procedures.

```
ChTeamCmd -h -l [-f "logfile"]
           -c "NIC1" "NIC2" <TeamMode> [-f "logfile"]
           -r "Team1" ["Team2"] [-f "logfile"]
```

Option Description :

- l Lists all Network Adapters and Teams in the System
- c Creates a team of two Network Adapters in the given Team Mode

Example: The following command creates an Active Backup team with "Local Area Connection" and "Local Area Connection 2"

```
ChTeamCmd -c "Local Area Connection" "Local Area Connection 2" 1
```

The TeamMode identifiers are

- 1 - Active Backup Mode
- 2 - Transmit Load Balancing Mode
- 3 - 802.3ad LACP Mode
- 4 - Active Backup with Failback to Active Mode

-r Removes an already configured team

Example: The following command removes a team with "Local Area Connection"

```
ChTeamCmd -r "Local Area Connection"
```

Note: If no argument is specified all teams configured in the system will be removed.

-f Write into a log file