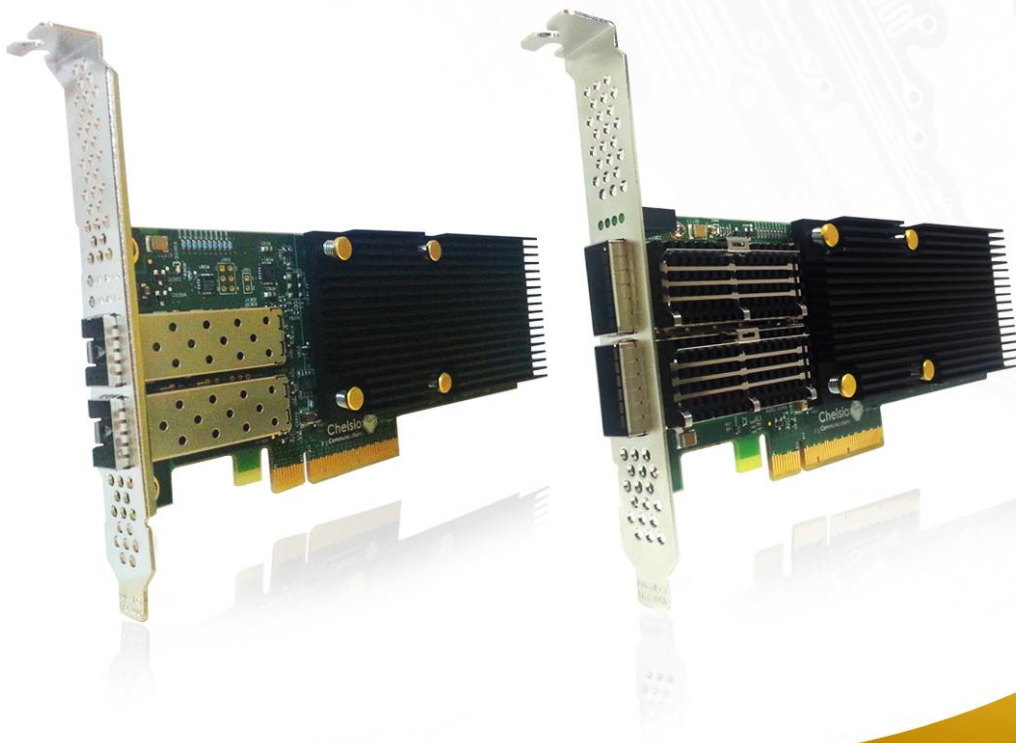




Chelsio T5/T4 Unified Boot Option ROM for DOS

Installation and User's Guide



This document and related products are distributed under licenses restricting their use, copying, distribution, and reverse-engineering.

No part of this document may be reproduced in any form or by any means without prior written permission by Chelsio Communications.

All third party trademarks are copyright of their respective owners.

THIS DOCUMENTATION IS PROVIDED "AS IS" AND WITHOUT ANY EXPRESS OR IMPLIED WARRANTIES, INCLUDING, WITHOUT LIMITATION, THE IMPLIED WARRANTIES OF MERCHANTABILITY AND FITNESS FOR A PARTICULAR PURPOSE.

THE USE OF THE SOFTWARE AND ANY ASSOCIATED MATERIALS (COLLECTIVELY THE "SOFTWARE") IS SUBJECT TO THE SOFTWARE LICENSE TERMS OF CHELSIO COMMUNICATIONS, INC.



Chelsio Communications (Headquarters)

370 San Aleso Ave.
Suite 100
Sunnyvale, CA 94085
U.S.A

www.chelsio.com

Tel: 408.962.3600

Fax: 408.962.3661

Chelsio (India) Private Limited

Subramanya Arcade, Floor 3, Tower B
No. 12, Bannerghatta Road,
Bangalore-560029
Karnataka,
India

Tel: +1-91-80-4039-6800

Chelsio KK (Japan)

SHIMA Akasaka Bldg.
Minato-ku, Tokyo
Japan 107-0052

Tel: 03-6234-4353

Sales

For all sales inquiries please send email to sales@chelsio.com

Support

For all support related questions please send email to support@chelsio.com

Copyright © 2013 Chelsio Communications. All Rights Reserved.

Chelsio® is a registered trademark of Chelsio Communications.

All other marks and names mentioned herein may be trademarks of their respective companies.

Document History

Version	Revision Date
1.0.0	05/18/2012
1.0.1	07/30/2012
1.0.2	10/05/2012
1.0.3	16/05/2012
1.0.4	07/31/2013
1.0.5	09/20/2013
1.0.6	10/10/2013
1.0.7	12/05/2013


TABLE OF CONTENTS

1. Introduction	5
1.1. Hardware Requirements	5
1.2. Software Requirements	5
1.3. Package Contents	6
2. Hardware Installation	7
3. Flashing firmware and option ROM	9
4. Configuring PXE Server	13
5. PXE boot process	14
5.1. For Legacy PXE boot	14
6. Appendix	19
6.1. Chelsio End-User License Agreement (EULA)	19

1. Introduction

PXE is short for Preboot eXecution Environment and is used for booting computers over an ethernet network using a Network Interface Card (NIC).

This section of the guide explains how to configure and use Chelsio T5/T4 Unified Boot Option ROM which flashes PXE Option ROM onto Chelsio's converged network adapters (CNAs). It adds Network boot functionality.

 **Note** *Currently only Legacy PXE supported.*

1.1. Hardware Requirements

1.1.1. Supported Adapters

The following are the currently shipping Chelsio Adapters that are compatible with Chelsio Unified Boot Option ROM software:

- T520-LL-CR
- T520-SO-CR
- T520-CR
- T540-CR
- T580-LP-CR
- T580-SO-CR
- T420-CR
- T440-CR
- T422-CR
- T420-BCH
- T420-SO-CR
- T440-LP-CR
- T420-LL-CR
- T420-BT
- T404-BT

1.2. Software Requirements

Chelsio Unified Boot Option ROM software requires Disk Operating System to flash PXE ROM onto Chelsio T5 and T4 adapters.

1.3. Package Contents

Chelsio Unified Boot Option ROM software package contains the following:

- Unified Boot Option ROM image and a legacy flash utility which can be used to flash Unified Boot Option ROM onto Chelsio's T5 and T4 based Converged Network Adapters (CNAs). It also contains T5 and T4 firmware files.
- **docs:** The docs directory contains support documents - README, Release Notes and User's Guide (this document) for the software package.

2. Hardware Installation

1. Shutdown/power off your system.
2. Power off all remaining peripherals attached to your system.
3. Unpack the Chelsio adapter and place it on an anti-static surface.
4. Remove the system case cover according to the system manufacturer's instructions.
5. Remove the PCI filler plate from the slot where you will install the Ethernet adapter.
6. For maximum performance, it is highly recommended to install the adapter into a PCIE x8 slot.
7. Holding the Chelsio adapter by the edges, align the edge connector with the PCI connector on the motherboard. Apply even pressure on both edges until the card is firmly seated. It may be necessary to remove the SFP (transceiver) modules prior to inserting the adapter.
8. Secure the Chelsio adapter with a screw, or other securing mechanism, as described by the system manufacturer's instructions. Replace the case cover.
9. After securing the card, ensure that the card is still fully seated in the PCIE x8 slot as sometimes the process of securing the card causes the card to become unseated.
10. Connect a fiber cable, multi-mode for short range (SR) optics or single-mode for long range (LR) optics, to the 10Gb Ethernet adapter or regular Ethernet cable for the 1Gb Ethernet adapter.
11. Power on your system.
12. Verify if the adapter was installed successfully:
 - On Linux systems, run `lspci` command and you should see a similar output:

```
[root@host~]# lspci | grep -i Chelsio
03:00.0 Ethernet controller: Chelsio Communications Inc T420-CR Unified Wire
Ethernet Controller
03:00.1 Ethernet controller: Chelsio Communications Inc T420-CR Unified Wire
Ethernet Controller
03:00.2 Ethernet controller: Chelsio Communications Inc T420-CR Unified Wire
Ethernet Controller
03:00.3 Ethernet controller: Chelsio Communications Inc T420-CR Unified Wire
Ethernet Controller
03:00.4 Ethernet controller: Chelsio Communications Inc T420-CR Unified Wire
Ethernet Controller
03:00.5 SCSI storage controller: Chelsio Communications Inc T420-CR Unified
Wire Storage Controller
03:00.6 Fibre Channel: Chelsio Communications Inc T420-CR Unified Wire
Storage Controller
03:00.7 Ethernet controller: Chelsio Communications Inc Device 0000
```

- On Windows systems, follow these steps:
 - i. Open **Device Manager** in **Control Panel**.
 - ii. Under **Other devices** section, Chelsio adapter should be listed as **Ethernet Controller**. If the adapter is not listed, right-click on the system name or click on the **Actions** menu and select **Scan for hardware changes**.

For Chelsio T4 adapters, the physical functions are currently assigned as:

- Physical functions 0 - 3: for the SR-IOV functions of the adapter
- Physical function 4: for all NIC functions of the adapter
- Physical function 5: for iSCSI
- Physical function 6: for FCoE
- Physical function 7: Currently not assigned

13. Based on the operating system, install the appropriate network driver. Install and load *cxgb4* for Linux systems and *VBD* and *NDIS* for Windows systems.


14. Finally, verify if the card is discovered:

- For Linux systems, examine the output of *dmesg* and you should see a similar output:

```
eth0: Chelsio T420-CR rev 2 10GBASE-SFP RNIC PCIe x8 MSI-X
0000:04:00.4: S/N: PT18111226, P/N: 110112140D0
```

The above outputs indicate the hardware configuration of the adapters as well as the Serial numbers. As observed by the x8, the card is properly installed in an x8 slot on the machine and using MSI-X interrupts.

- For Windows systems, open **Device Manager** again. Expand **Network adapters** section and now Chelsio adapter should be listed.

 **Note** *Network device names for Chelsio's physical ports are assigned using the following convention: the port farthest from the motherboard will appear as the first ethernet network interface. However, for T580-LP-CR and T420-BT adapters, the association of physical ethernet ports and their corresponding network device names is opposite. For these adapters, the port nearest to the motherboard will appear as the first network interface.*

3. Flashing firmware and option ROM

Chelsio legacy flash utility (*cfut4.exe*) is used to program the PXE Option ROM image onto the Chelsio CNAs.

Example # 1: This example assumes you are using a USB flash drive as a storage media for the necessary files. Follow the steps below:

- i. Create a DOS bootable USB flash drive.
- ii. Create *CHELSIO* folder on the USB flash drive.
- iii. If you haven't done already, download *Chelsio-Uboot-x.x.x.xx.zip* from Chelsio Download Center, service.chelsio.com
- iv. Unzip the downloaded package.
- v. Copy all the files and place them in the *CHELSIO* folder created on the USB flash drive.
- vi. Plug in the USB flash drive in the system on which the Chelsio CNA is installed.
- vii. Reboot the system and enter the BIOS setup.
- viii. Make the USB flash drive as the primary boot device. Save the changes and exit.
- ix. Once the system boots from the USB flash drive, change your working directory to *CHELSIO* directory:

```
C:\>cd CHELSIO
```

```
C:\>cd CHELSIO_
```

3. Flashing firmware and option ROM

- x. Run the following command to list all Chelsio CNAs present in the system. The list displays a unique index for each CNA found.

```
C:\CHELSIO>cfut4 -l
```

```
C:\CHELSIO>cfut4 -l

Chelsio T4/T5 Flash Utility v1.5

Index  ChelsioAdapterType  DevId
=====
[0]    T440-LP-CR        400e
```

- xi. Delete any previous version of Option ROM flashed on the CNA:

```
C:\CHELSIO>cfut4 -d <idx> -xb
```

Here, `idx` is the CNA index found in step ix (0 in this case)

```
C:\CHELSIO>cfut4 -d 0 -xb

Chelsio T4/T5 Flash Utility v1.5

Erasing serial flash sector(s) ... Done
Reboot machine for changes to take effect
```

- xii. Delete any previous firmware using the following command:

```
C:\CHELSIO>cfut4 -d <idx> -xh -xf
```

Here, `idx` is the CNA index found in step ix (0 in this case)

```
C:\CHELSIO>cfut4 -d 0 -xh -xf

Chelsio T4/T5 Flash Utility v1.5

Erasing serial flash sector(s) ... Done
Erasing serial flash sector(s) ... Done
Reboot machine for changes to take effect
```

3. Flashing firmware and option ROM

- xiii. Run the following command to flash the appropriate firmware (*t54fw -x.x.xx.x.bin* for T5 adapters; *t4fw-x.x.xx.xxx.bin* for T4 adapters).

```
C:\CHELSIO>cfut4 -d <idx> -uf <firmware_file>.bin
```

Here, `idx` is the CNA index found in step ix (0 in this case) and `firmware_file` is the firmware image file present in the *CHELSIO* folder.

```
C:\CHELSIO>cfut4 -d 0 -uf t4fw-1~1.bin

Chelsio T4/T5 Flash Utility v1.5

Erasing serial flash sector(s) ... Done
Writing Image at Base 00080000 ... Done
Writing Image at Base 00088000 ... Done
Writing Image at Base 00090000 ... Done
Writing Image at Base 00098000 ... Done
Writing Image at Base 000a0000 ... Done
Writing Image at Base 000a8000 ... Done
Writing Image at Base 000b0000 ... Done
Writing Image at Base 000b8000 ... Done
Writing Image at Base 000c0000 ... Done
Writing Image at Base 000c8000 ... Done
Writing Image at Base 000d0000 ... Done
Writing Image at Base 000d8000 ... Done
Writing Image at Base 000e0000 ... Done
Writing Image at Base 000e8000 ... Done
Writing Image at Base 000f0000 ... Done
Reboot machine for changes to take effect
```

3. Flashing firmware and option ROM

- xiv. Flash the unified option ROM onto the Chelsio CNA, using the following command:

```
C:\CHELSIO>cfut4 -d <idx> -ub cuwlb4.bin
```

Here, `idx` is the CNA index found in step ix (0 in this case) and `cuwlb4.bin` is the unified option ROM image file.

```
C:\CHELSIO>cfut4 -d 0 -ub cuwlb4.bin

Chelsio T4/T5 Flash Utility v1.5

Erasing serial flash sector(s) ... Done
Writing Image at Base 00000000 ... Done
Writing Image at Base 00008000 ... Done
Writing Image at Base 00010000 ... Done
Writing Image at Base 00018000 ... Done
Writing Image at Base 00020000 ... Done
Writing Image at Base 00028000 ... Done
Writing Image at Base 00030000 ... Done
Writing Image at Base 00038000 ... Done
Writing Image at Base 00040000 ... Done
Writing Image at Base 00048000 ... Done
Writing Image at Base 00050000 ... Done
Writing Image at Base 00058000 ... Done
Writing Image at Base 00060000 ... Done
Writing Image at Base 00068000 ... Done
Writing Image at Base 00070000 ... Done
Reboot machine for changes to take effect
```

- xv. Delete any previous Option ROM settings:

```
C:\CHELSIO>cfut4 -d <idx> -xc
```

Here, `idx` is the CNA index found in step ix (0 in this case)

```
C:\CHELSIO>cfut4 -d 0 -xc

Chelsio T4/T5 Flash Utility v1.5

Erasing serial flash sector(s) ... Done
Reboot machine for changes to take effect
```

- xvi. Reboot the system for changes to take effect.

4. Configuring PXE Server

The following components are required to configure a server as PXE Server:

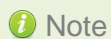
- DHCP Server
- TFTP Server

PXE server configuration steps for Linux can be found on following links:

- http://linux-sxs.org/internet_serving/pxeboot.html
- http://www.howtoforge.com/ubuntu_pxe_install_server

PXE server configuration steps for Windows can be found on following links:

- <http://technet.microsoft.com/en-us/library/cc771670%28WS.10%29.aspx>
- <http://tftpd32.jounin.net/> (Use port # 67, set PXE option and provide bootable file name in settings)
- <http://unattended.sourceforge.net/pxe-win2k.html>



Note

Chelsio Communications does not take any responsibility regarding contents given in above mentioned links. These are given for example purposes only.

5. PXE boot process

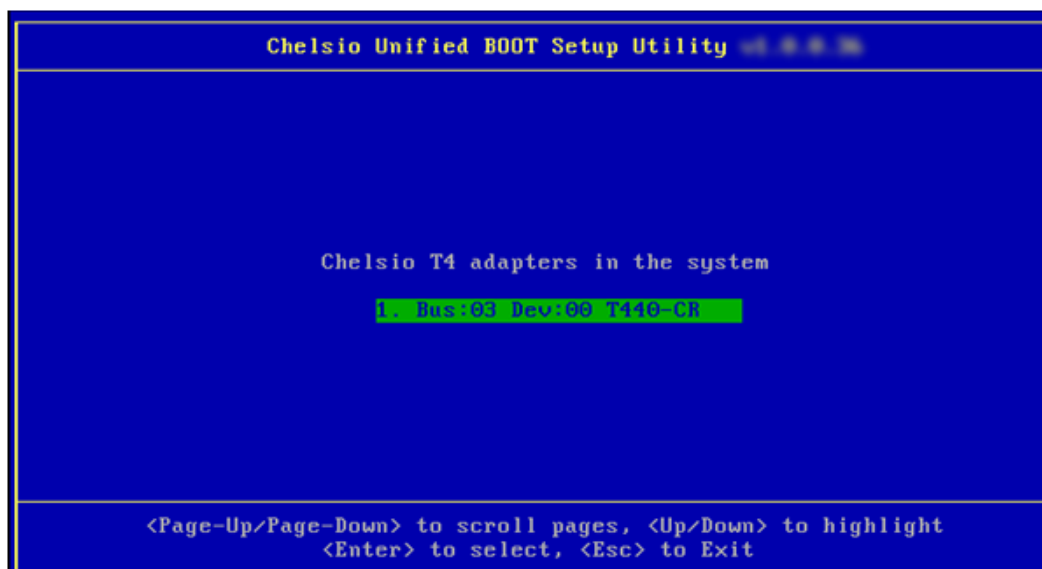
Before proceeding, please ensure that the Chelsio CNA has been flashed with the provided firmware and option ROM (See [Flashing firmware and option ROM](#)).

5.1. For Legacy PXE boot

- i. After configuring the PXE server, make sure the PXE server works. Then reboot the client machine.
- ii. Press [Alt+C] when the message "*Chelsio Unified Boot BIOS, Copyright (C) 2003-2013 Chelsio Communications Press <Alt-C> to Configure T4/T5 Card(s). Press <Alt-S> to skip BIOS*" appears on the screen to enter the configuration utility.

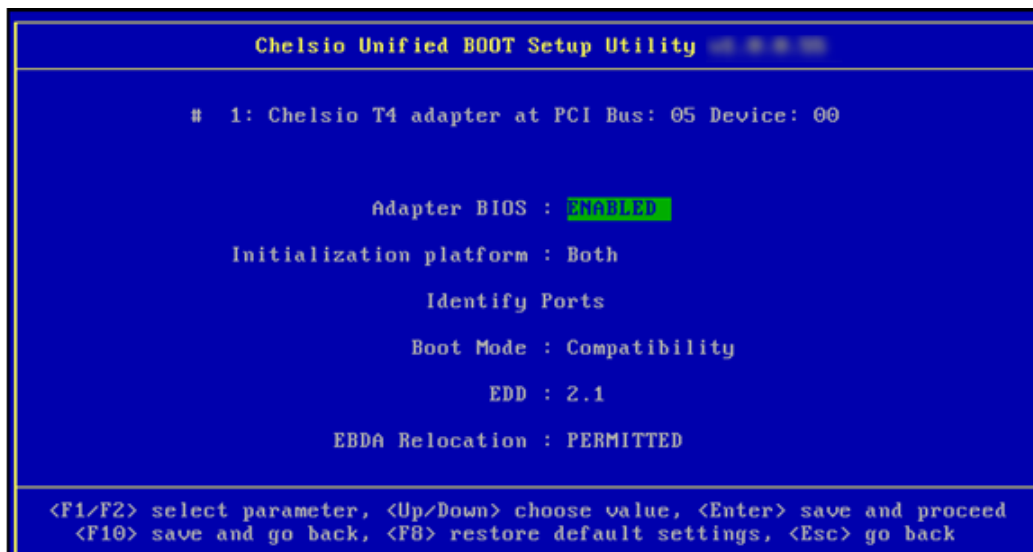
```
Chelsio Unified Boot BIOS
Copyright (C) 2003-2013 Chelsio Communications
Press <Alt-C> to Configure T4/T5 Card(s). Press <Alt-S> to skip BIOS.
```

- iii. The configuration utility will appear as below:



- iv. Choose the CNA on which you flashed the option ROM image. Hit [Enter].

- v. Enable the Adapter BIOS using arrow keys if not already enabled. Hit [ENTER].

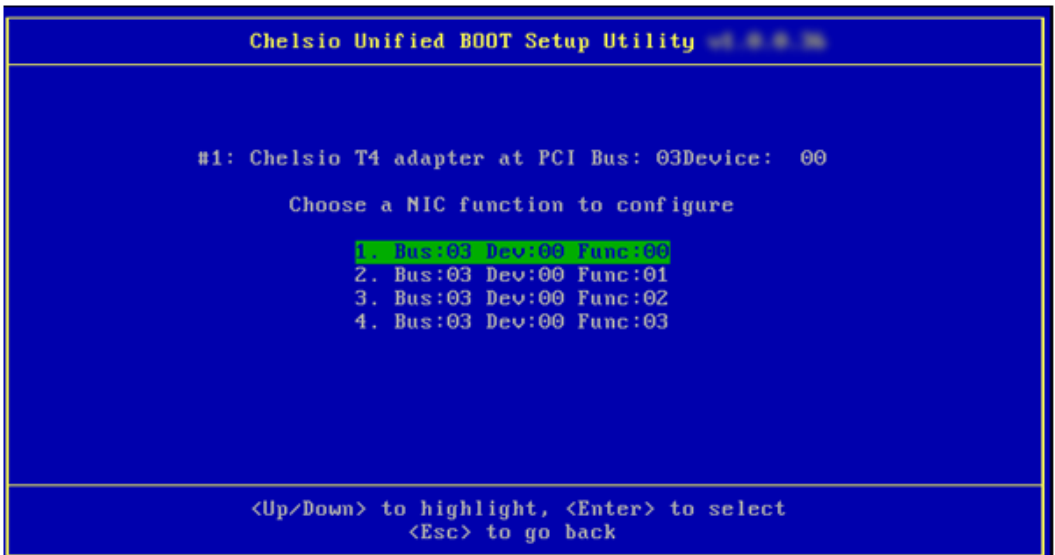


Note Use the default values for Boot Mode, EDD and EBDA Relocation parameters, unless instructed otherwise.

- vi. Choose PXE from the list to configure. Hit [Enter].



- vii. Use the arrow keys to highlight the appropriate function among the supported NIC functions and hit [Enter] to select.



- viii. Enable NIC function bios if not already enabled.



- ix. Choose the boot port to try the PXE boot. It is recommended to only enable functions and ports which are going to be used. Please note that enabling NIC Func 00 will enable port 0 for PXE, enabling NIC Func 01 will enable port 1 and so on for NIC function. Please refer the table below:

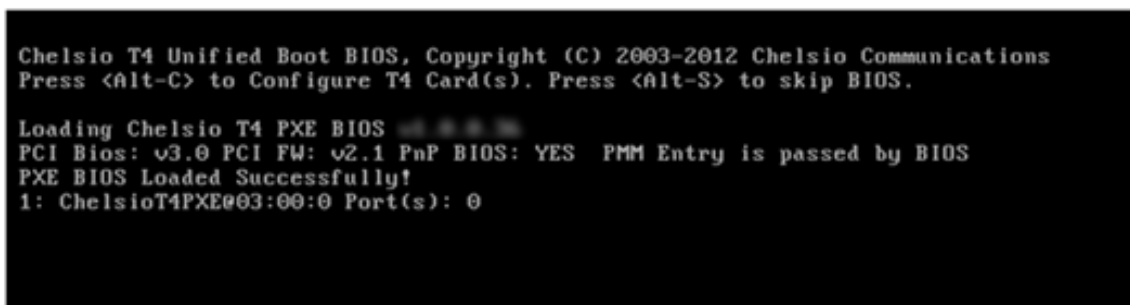
5. PXE boot process

NIC Function enabled	Ports enabled
NIC Func00	00
NIC Func01	01
NIC Func02	02
NIC Func03	03

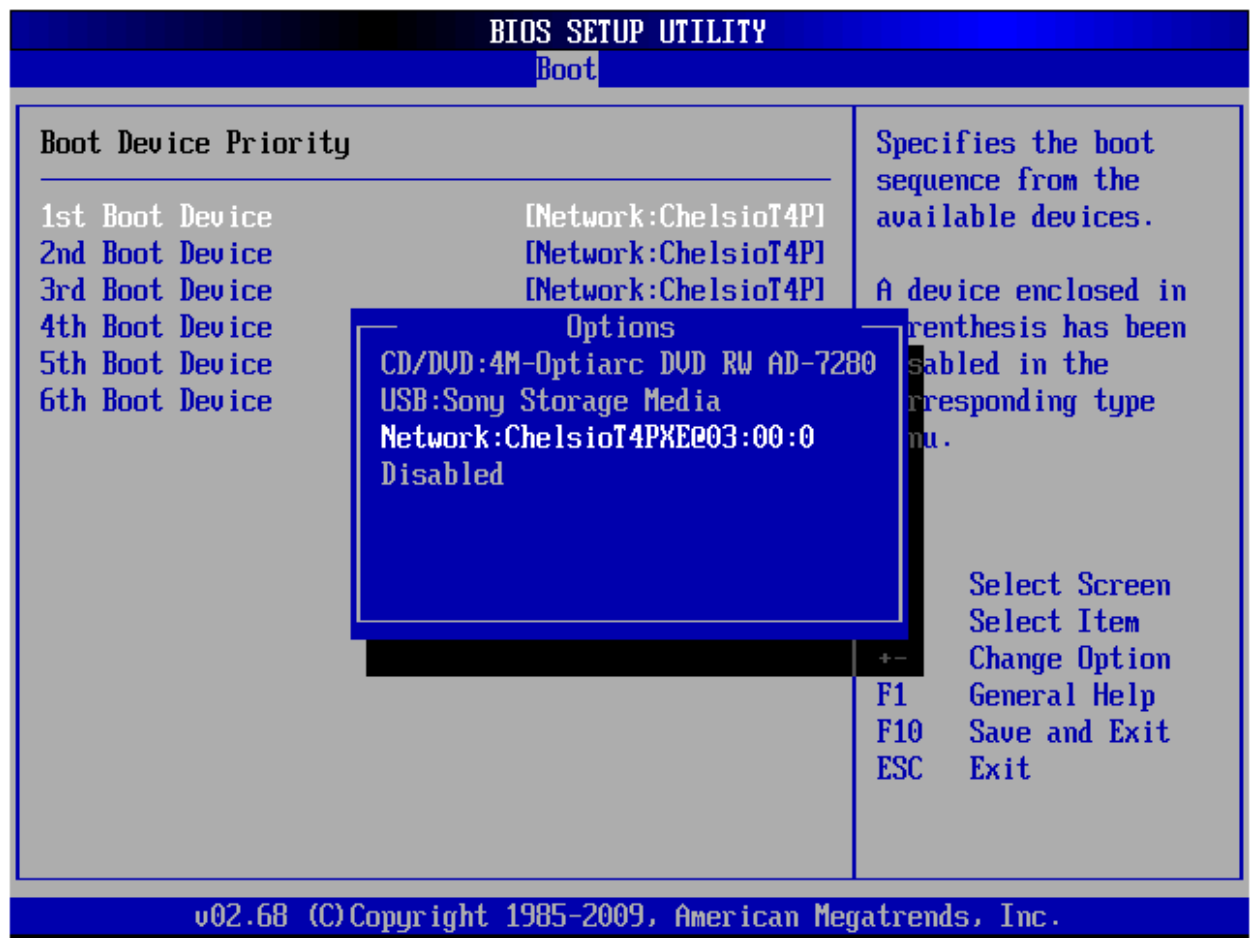
- x. Hit [Esc] and then [Y] to save configuration changes.



- xi. Reboot the system.
- xii. Hit [F2] or [DEL] or any other key as mentioned during system startup to enter the system setup.
- xiii. Allow the Chelsio option ROM to initialize and setup PXE devices.
DO NOT PRESS ALT-S to skip Chelsio option ROM.



xiv. In the system setup, choose any of the Chelsio PXE devices as the first boot device.



xv. Reboot. DO NOT PRESS ALT-S to skip Chelsio option ROM, during POST.

xvi. Hit [F12] key when prompted to start PXE boot.

6. Appendix

6.1. Chelsio End-User License Agreement (EULA)

Installation and use of the driver/software implies acceptance of the terms in the Chelsio End-User License Agreement (EULA).

IMPORTANT: PLEASE READ THIS SOFTWARE LICENSE CAREFULLY BEFORE DOWNLOADING OR OTHERWISE USING THE SOFTWARE OR ANY ASSOCIATED DOCUMENTATION OR OTHER MATERIALS (COLLECTIVELY, THE "SOFTWARE"). BY CLICKING ON THE "OK" OR "ACCEPT" BUTTON YOU AGREE TO BE BOUND BY THE TERMS OF THIS AGREEMENT. IF YOU DO NOT AGREE TO THE TERMS OF THIS AGREEMENT, CLICK THE "DO NOT ACCEPT" BUTTON TO TERMINATE THE INSTALLATION PROCESS.

1. License. Chelsio Communications, Inc. ("Chelsio") hereby grants you, the Licensee, and you hereby accept, a limited, non-exclusive, nontransferable license to:

(i) install and use the Software on a single computer system or on multiple workstations, systems and servers that incorporate a Chelsio network adapter and may be accessed by multiple users from multiple locations; and (ii) make one copy of the Software in machine readable form solely for back-up purposes, provided you reproduce Chelsio's copyright notice and any proprietary legends, as required by Chelsio.

2. Restrictions. This license granted hereunder does not constitute a sale of the Software or any copy thereof. Except as expressly permitted under this Agreement, you may not:

(i) reproduce, modify, adapt, translate, rent, lease, loan, resell for profit, distribute, or create derivative works of or based upon, the Software or any part thereof; or

(ii) make available the Software, or any portion thereof, in any form, on the Internet. The Software contains trade secrets and, in order to protect them, you may not decompile, reverse engineer, disassemble, or otherwise reduce the Software to a human-perceivable form. You assume full responsibility for the use of the Software and agree to use the Software legally and responsibly.

3. Ownership of Software. As Licensee, you own only the media upon which the Software is recorded or fixed, but Chelsio retains all right, title and interest in and to the Software recorded on the original media and all subsequent copies of the Software, regardless of the form or media in or on which the Software may be embedded.

4. Confidentiality. You agree to maintain the Software in confidence and not to disclose the Software, or any information or materials related thereto, to any third party without the express written consent of Chelsio. You further agree to take all reasonable precautions to limit access of the Software only to those of your employees who reasonably require such access to perform their employment obligations and who are bound by confidentiality agreements with you.

5. Term. This license is effective in perpetuity, unless terminated earlier. You may terminate the license at any time by destroying the Software (including the related documentation), together with all copies or modifications in any form. Chelsio may terminate this license, and this license shall be deemed to have automatically terminated, if you fail to comply with any term or condition of this Agreement. Upon any termination, including termination by you, you must destroy the Software (including the related documentation), together with all copies or modifications in any form.

6. Limited Warranty. Chelsio warrants only that the media upon which the Software is furnished will be free from defects in material or workmanship under normal use and service for a period of thirty (30) days from the date of delivery to you. CHELSIO DOES NOT AND CANNOT WARRANT THE PERFORMANCE OR RESULTS YOU MAY OBTAIN BY USING THE SOFTWARE OR ANY PART THEREOF. EXCEPT FOR THE FOREGOING LIMITED WARRANTY, CHELSIO MAKES NO OTHER WARRANTIES, EXPRESS OR IMPLIED, AND HEREBY DISCLAIMS ALL OTHER WARRANTIES, INCLUDING, BUT NOT LIMITED, TO NON-INFRINGEMENT OF THIRD PARTY RIGHTS, MERCHANTABILITY AND FITNESS FOR A PARTICULAR PURPOSE. Some states do not allow the exclusion of implied warranties or limitations on how long an implied warranty may last, so the above limitations may not apply to you. This warranty gives you specific legal rights and you may also have other rights which vary from state to state.

7. Remedy for Breach of Warranty. The sole and exclusive liability of Chelsio and its distributors, and your sole and exclusive remedy, for a breach of the above warranty, shall be the replacement of any media not meeting the above limited warranty which is returned to Chelsio. If Chelsio or its distributor is unable to deliver replacement media which is free from defects in materials or workmanship, you may terminate this Agreement by returning the Software.

8. Limitation of Liability. IN NO EVENT SHALL CHELSIO HAVE ANY LIABILITY TO YOU OR ANY THIRD PARTY FOR ANY INDIRECT, INCIDENTAL, SPECIAL, CONSEQUENTIAL OR PUNITIVE DAMAGES, HOWEVER CAUSED, AND ON ANY THEORY OF LIABILITY, ARISING OUT OF OR RELATED TO THE LICENSE OR USE OF THE SOFTWARE, INCLUDING BUT NOT LIMITED TO LOSS OF DATA OR LOSS OF ANTICIPATED PROFITS, EVEN IF CHELSIO HAS BEEN ADVISED OF THE POSSIBILITY OF SUCH DAMAGES. IN NO EVENT SHALL CHELSIO'S LIABILITY ARISING OUT OF OR RELATED TO THE LICENSE OR USE OF THE SOFTWARE EXCEED THE AMOUNTS PAID BY YOU FOR THE LICENSE GRANTED HEREUNDER. THESE LIMITATIONS SHALL APPLY NOTWITHSTANDING ANY FAILURE OF ESSENTIAL PURPOSE OF ANY LIMITED REMEDY.

9. High Risk Activities. The Software is not fault-tolerant and is not designed, manufactured or intended for use or resale as online equipment control equipment in hazardous environments requiring fail-safe performance, such as in the operation of nuclear facilities, aircraft navigation or communication systems, air traffic control, direct life support machines, or weapons systems, in which the failure of the Software could lead directly to death, personal injury, or severe physical or environmental damage. Chelsio specifically disclaims any express or implied warranty of fitness for any high risk uses listed above.

10. Export. You acknowledge that the Software is of U.S. origin and subject to U.S. export jurisdiction. You acknowledge that the laws and regulations of the United States and other countries may restrict the export and re-export of the Software. You agree that you will not export or re-export the Software or documentation in any form in violation of applicable United States and foreign law. You agree to comply with all applicable international and national laws that apply to the Software, including the U.S. Export Administration Regulations, as well as end-user, end-use, and destination restrictions issued by U.S. and other governments.

6. Appendix

11. Government Restricted Rights. The Software is subject to restricted rights as follows. If the Software is acquired under the terms of a GSA contract: use, reproduction or disclosure is subject to the restrictions set forth in the applicable ADP Schedule contract. If the Software is acquired under the terms of a DoD or civilian agency contract, use, duplication or disclosure by the Government is subject to the restrictions of this Agreement in accordance with 48 C.F.R. 12.212 of the Federal Acquisition Regulations and its successors and 49 C.F.R. 227.7202-1 of the DoD FAR Supplement and its successors.

12. General. You acknowledge that you have read this Agreement, understand it, and that by using the Software you agree to be bound by its terms and conditions. You further agree that it is the complete and exclusive statement of the agreement between Chelsio and you, and supersedes any proposal or prior agreement, oral or written, and any other communication between Chelsio and you relating to the subject matter of this Agreement. No additional or any different terms will be enforceable against Chelsio unless Chelsio gives its express consent, including an express waiver of the terms of this Agreement, in writing signed by an officer of Chelsio. This Agreement shall be governed by California law, except as to copyright matters, which are covered by Federal law. You hereby irrevocably submit to the personal jurisdiction of, and irrevocably waive objection to the laying of venue (including a waiver of any argument of forum non conveniens or other principles of like effect) in, the state and federal courts located in Santa Clara County, California, for the purposes of any litigation undertaken in connection with this Agreement. Should any provision of this Agreement be declared unenforceable in any jurisdiction, then such provision shall be deemed severable from this Agreement and shall not affect the remainder hereof. All rights in the Software not specifically granted in this Agreement are reserved by Chelsio.

Chelsio reserves the right to modify this license agreement at any time without notice, and any modified version of this agreement shall supercede any earlier versions.

Should you have any questions concerning this Agreement, you may contact Chelsio by writing to:

Chelsio Communications, Inc.
370 San Aleso Ave.
Sunnyvale, CA 94085